



北京猎鹰集团
BEIJING LIEYING GROUP

北京猎鹰 鹰驰天下 猎遍九州



联系电话：

北京猎鹰保定分公司：0312-8155391

北京猎鹰高碑店分公司：0312-2920468

北京猎鹰广州分公司：0757-85921314

网址：www.猎鹰集团.com

www.lysjjt.com

邮箱：sales@lysjjt.com

北京猎鹰起重机械索具集团有限公司

BEIJING LIEYING LIFTING APPLIANCES RIGGING GROUP CO., LTD.

全力以赴 服务客户!

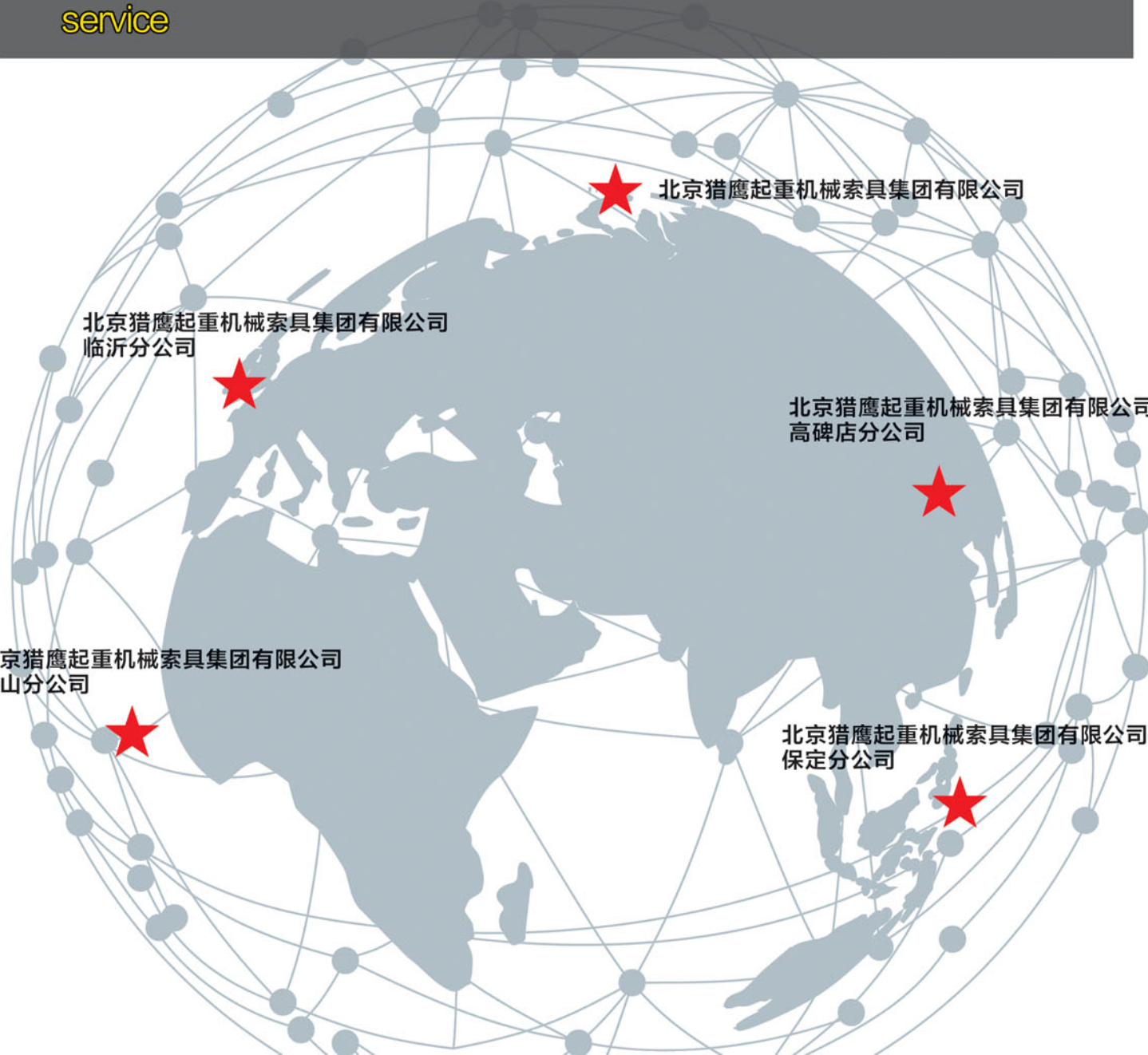
PROFESSIONAL FOCUS

- **公司愿景：管理优势 技术优势 领航未来**
Corporate vision: Management advantage Technological superiority
Pilot for the future
- **经营理念：系统性提高一次性工作质量水平**
让市场和客户得到更安全 更可靠 更好的服务
Operation philosophy: Systematic improvement of the quality of one-time work
Making the market and customers more secure, reliable and better service



企业资质

Company Certificate



公司简介

北京猎鹰起重机械索具集团有限公司（以下简称：北京猎鹰），成立于上个世纪90年代。下辖5个全资控股分公司：“研发生产制造（北京分公司+保定分公司）+ 贸易公司（河北高碑店分公司、广州佛山分公司、山东临沂分公司）”。历经20余载的发展壮大，北京猎鹰的科研、技术、质量、生产、管理团队，也已具备了良好的行业“管理优势、技术优势”。量产的各品种、规格系列产品有：

★ISO国际标准产品：起重用新型环链电动提升机/盘式电机（4级、6级、8级）/微型电机/环链电动葫芦/微型电动葫芦/手拉葫芦/G80级、G100级起重链条（高精度、普通精度）/高强度合成纤维吊装带（合成纤维圆形吊装带）、（合成纤维扁平吊装带）]。

★欧盟（EN）/德国（DIN）/美国（ASTM）/英国（BS）/日本（JIS）等标准产品：环链电动葫芦/80级、100级起重链条（高精度、普通精度）/80级、100级起重索具配件/高强度合成纤维吊装带（EA、EB等）。

★国家（GB）、行业（JB）标准产品：起重用新型环链电动提升机/盘式电机（4级、6级、8级）/微型电机/环链电动葫芦/微型电动葫芦/手拉葫芦/80级、100级起重链条（高精度、普通精度）/80级、100级起重索具配件/高强度合成纤维吊装带（EA、EB等）。

★企业（QB）标准产品（专利产品）：起重用新型环链电动提升机/微型电机/微型电动葫芦等。

[注：北京猎鹰可根据客户需求研发和生产起重类非标准类产品。]

北京猎鹰已发展成为，中国北方专业研发、设计、生产制造，高品、高端、多品种、规格，起重索具类配套产品的，行业“管理优势、技术优势”企业集团。各类索具产品品种、规格齐全，自行配套，其产品的可靠性、可用性水平，突破了行业技术瓶颈。

近年来，北京猎鹰董事会一班人，在董事长的带领下，干十年前想的事，想十年后干的事，随着时代与市场的多变性发展，高端战略布局、审时度势造势，不断地配置改进，各类配套产品的，研发、生产制造装备（自动化、智能化）硬件条件，不断地汇聚国内有梦想、有思路、有方法、不缺理论的行业实力精英团队。为办好北京猎鹰“布局、造势”的“事”，为北京猎鹰进一步健康发展奠定了坚实的基础。

北京猎鹰的各品种、规格产品的性能指标如：索具类产品的2.5倍WLL不变形测试、4倍WLL破断力测试、产品形态、尺寸精度等，在严格符合GB、ISO、EN等产品标准的基础上，实现了超长度（≥6M）测试，各项性能、指标能力，超越行业工艺、技术瓶颈的突破。

各类产品的关键工序如：“电机制造/链条编焊/索具配件热模锻/机加工/热处理/合成纤维编织/染色/缝纫生产等的工序、工艺布置与优化及管控水平；大样本量的加严批抽检试验证据表明：北京猎鹰实现了生产流程关键工序管控水平卓越（超越了相关的产品标准要求）。工艺管控及优化能力超越行业水平，产品批的不合格率水平远低于国内同行业企业，稳定确立了北京猎鹰产品，在国内同行业工艺、技术领域中的领先地位。

北京猎鹰随着企业市场占有率的不断健康拓展，为满足市场需求涉及上述各类产品的，新的资源战略布局项目（新厂区），2020年起将陆续付诸实施。其产品均系中、高端（80级、100级），其使用性能、安全可靠性能，稳定达到或高于国家产品标准要求，符合欧美等国家和地区相关的产品标准技术要求。

北京猎鹰目前拥有起重：环链电动提升机车间；环链电动葫芦车间；手拉葫芦车间；盘式电机车间；微型电机车间；起重链条车间；索具配件锻造车间；机加工车间；热处理车间；起重吊带编织车间（合成纤维）；起重吊带染色车间（合成纤维）；起重吊带缝纫车间（合成纤维）；中心试验室（设备配置系国家试验室认可级别）。

拥有行业先进的125型、150型、300型变频技术（自动化/智能化）起重链条编、焊生产线；链条校准生产线；长距离链条2.5倍WLL工拉生产线；热处理工艺生产线；环链电动提升机工序性试验设备；环链电动葫芦工序性试验设备；手拉葫芦工序性试验设备；产品表面处理生产线计50余条（台套）。配置了“自动化、智能化”热模锻索具配件生产线10余条，自动化、智能化模具及机加工生产线20余条；起重吊带（EA、EB）编织生产线40余条，起重吊带缝纫设备40台套。

中心试验室配置了先进的智能化5000KN（500T）卧式拉力机；智能化2000KN（200T）、1000KN（100T）、600KN（60T）立式拉力机；智能化钢铁材质分析直读光谱仪、智能化金属相分析仪；智能化合成纤维拉力测试仪等检测试验设备共计12台套。北京猎鹰总的“自动化、智能化”配套设备及生产线近200条（台套）。

北京猎鹰通过了ISO9001：2015国际质量管理体系标准认证，通过了国际CE、GS产品安全认证。获得了北京市优秀企业，信用建设先进单位，北京市科技创新单位，中国知名品牌等称号。

北京猎鹰拥有，国内、外营销产品网点百余个，国内产品市场占有率稳定，产品远销欧美、中东、澳大利亚、拉丁美洲、东南亚、非洲等地区。

北京猎鹰起重机械索具集团 属于中国！属于世界！属于您！与北京猎鹰同行，共创永久财富！

北京猎鹰起重机械索具集团永远在路上，为持续满足您的需求。

◆ 持续努力打造更高水平的企业管理优势！

◆ 持续努力打造更高水平的企业技术优势！

永不满足！

将诚信 专业 卓越 优质的服务 献给每一位客户。

Company Profile

Beijing Lieying Lifting Appliances Rigging Group Co., Ltd.(hereinafter referred to as Beijing Lieying) was founded in the 1990s. Under the jurisdiction of five wholly-owned holding branches: "R & D manufacturing (Beijing Branch Baoding Branch) Trading Company (Hebei Gaobeidian Branch, Guangzhou Foshan Branch, Shandong Linyi Branch)". After more than 20 years of development, Beijing Lieying's scientific research, technology, quality, production, management team, has had a good industry "management advantages, technical advantages." Mass production of various varieties, specifications series of products are:

★ ISO international standard products: starting and reusing new ring chain electric hoist / disc type motor (grade 4,6,8)/ micro motor / ring chain electric hoist / micro electric hoist / hand pull hoist / G80, G100 grade lifting chain (high precision, common precision)/ high strength synthetic fiber hoisting belt [(synthetic fiber circular hoisting belt),(synthetic fiber flat hoisting belt)].

★ Standard products such as EU (EN)/Germany (DIN)/US (ASTM)/UK (BS)/Japan (JIS): ring chain electric hoist /80 grade,100 grade lifting chain (high precision, common precision)/80 grade,100 grade lifting rigging accessories / high strength synthetic fiber hoisting belt (EA, EB, etc.).

★ National (GB), industry (JB) standard products: starting and reusing new ring chain electric hoist / disc type motor (grade 4,6,8)/ miniature motor / ring chain electric hoist / miniature electric hoist / hand pull hoist / grade 80,100 grade lifting chain (high precision, common precision)/ grade 80,100 grade lifting rigging accessories / high strength synthetic fiber hoisting belt (EA, EB, etc.).

★ Enterprise (QB) standard products (patented products): start to reuse new ring chain electric hoist / micro motor / micro electric hoist, etc.

[Note: Beijing Lieying can develop and produce lifting non-standard products according to customer needs.]

The Beijing Lieying has developed into a group of enterprises specialized in R & D, design, production and manufacture, high-grade, high-end, multi-variety, specification, lifting and equipment products in the north of China. All kinds of rigging products, complete specifications, self-matching, its product reliability, availability level, broke through the industry technical bottleneck.

In recent years, under the leadership of the chairman of the board of directors of the Beijing Lieying, a group of people have been doing what they thought ten years ago and what they think they will do ten years later. With the development of the times and the market, the high-end strategic layout, the assessment of the situation, the continuous allocation of improvements, the development of various supporting products, the production of equipment (automation, intelligence) hardware conditions, and the continuous convergence of domestic dream, thinking, methods, no lack of theory of industry strength elite team. It lays a solid foundation for the further healthy development of the Beijing Lieying.

The performance indexes of all kinds and specifications of Beijing Lieying products such as: 2.5 times WLL non-deformation test of rigging products, 4 times WLL breaking force test, product shape, dimensional precision, etc., on the basis of strictly conforming to GB, ISO, EN and other product standards, the ultra-longness (≥6M) test has been realized, and the performance and index ability have exceeded the breakthrough of technical process and technical bottleneck.

The key processes of various products such as: "Electrical manufacturing / chain welding / rigging fittings thermal forging / machining / heat treatment / synthetic fiber weaving / dyeing / sewing production processes, process layout and optimization and control level; large sample size strict batch sampling test evidence shows that: Beijing Lieying achieved the production process key process control level excellence (beyond the relevant product standard requirements). The ability of process control and optimization exceeds the industry level, and the unqualified rate of product batch is far lower than that of domestic enterprises in the same industry, which has established the Beijing Lieying products steadily, and has a leading position in the same industry and technology field in China.

Beijing Lieying with the continuous healthy expansion of market share, in order to meet the market demand involving the above-mentioned products, the new strategic layout of resources (new plant), will be implemented in 2020. Its products are medium and high-end (grade 80, grade 100), its use performance, safety and reliability performance, stable to meet or higher than the national product standards requirements, in line with the European and American and other countries and regions related to product standards and technical requirements.

Beijing Lieying currently owns lifting: ring chain electric hoist workshop; ring chain electric hoist workshop; hand-drawn hoist workshop; disc motor workshop; micro motor workshop; lifting chain workshop; rigging workshop; processing workshop; heat treatment workshop; lifting sling knitting workshop (synthetic fiber); hoisting sling dyeing workshop (synthetic fiber); hoisting sling sewing workshop (synthetic fiber); central laboratory (equipment equipped with national laboratory approved grade).

With the industry's advanced 125,150,300 frequency conversion technology (automation / intelligent) lifting chain, welding production line; chain calibration production line; long-distance chain 2.5 times WLL production line; heat treatment process production line; ring chain electric hoist process test equipment; ring chain electric hoist process test equipment; hand-drawn gourd process test equipment; surface treatment production line more than 50 sets (). Equipped with "automatic, intelligent" hot die forging rigging accessories production line more than 10, automatic, intelligent mold and machining production line more than 20; lifting sling (EA, EB) weaving production line more than 40, lifting sling sewing equipment 40 sets.

The central laboratory is equipped with advanced intelligent 5000KN (500T) horizontal tension machine; intelligent 2000KN (200T), 1000KN (100T), 600KN (60T) vertical tension machine; intelligent iron and steel material analysis direct reading spectrometer, intelligent metal metallographic analyzer; intelligent synthetic fiber tension tester and other testing equipment a total of 12 sets. Beijing Lieying's total "automation, intelligent" equipment and production line nearly 200(sets).

Beijing Lieying has passed ISO9001:2015 international quality management system standard certification, passed international CE, GS product safety certification. Has obtained the Beijing outstanding enterprise, the credit construction advanced unit, the Beijing science and technology innovation unit, the Chinese famous brand and so on title.

Beijing Lieying owned, domestic and foreign marketing product outlets more than 100, the domestic product market share is stable, products exported to Europe and the United States, the Middle East, Austria, Latin America, Southeast Asia, Africa and other regions.

Beijing Lieying Lifting Appliances Rigging Group belongs to China! The world! It belongs to you! Walk with the Beijing Lieying to create permanent wealth!

Beijing Lieying Lifting Appliances Rigging Group is always on the way to meet your needs.

◆ Continue to strive to build a higher level of enterprise management advantages!

◆ Continue to strive to create a higher level of enterprise technology advantages!

Never be satisfied!

Will be honest Professional Excellence Quality Service dedicated to every customer.

产品目录 Product Content

“北京猎鹰”可根据客户需求，研发、设计、生产制造，非标类产品/定制类产品。

"Beijing lieying" can be based on customer needs, R & D, design, manufacturing, non-standard products/custom products.

- 01-02 **一、新型环链电动提升机系列**
New Ring Chain Electric Hoist Series
- 03-07 **二、环链电动葫芦系列**
Electric Chain Hoist Series
- 08-10 **三、盘式电机/微型电动葫芦系列**
Disk Type Motor / Miniature Electric Hoist Series
- 15-20 **四、手拉葫芦/手扳葫芦系列**
Hand-drawn gourd / Hand wrench gourd Series
- 21-26 **五、电动/手拉行车系列**
Electric/hand-held driving series
- 37-34 **六、高强度链条系列**
High Strength Chain Series
- 35-43 **七、高强度索具配件系列**
High Strength Rigging Accessory Series
- 44-47 **八、高强度组合索具系列**
High-Strength Combined Rigging Series
- 48-51 **九、高强度合成纤维起重吊装带系列**
High Strength Synthetic Fiber Lifting Ribbon Series

注：样本书中各类产品的尺寸公差详见相关的产品标准。

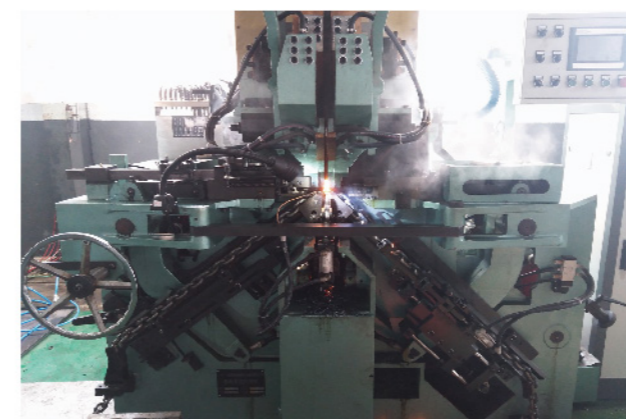
Note: the dimensional tolerances of all kinds of products in the sample book are detailed in the relevant product standards.

北京猎鹰公司产品由中国人寿财产保险股份有限公司承保

The products of Beijing Falcon Company are covered by China Life Property Insurance Co. Ltd.

“北京猎鹰”专业研发、生产制造起重索具类产品（电动环链葫芦提升机类/盘式电机类/起重链条类/起重索具配件类/起重合成纤维吊带类），五大类产品均具有行业独到的“工艺布置+优化水平”，产品采用“优质合金钢/优质高强度合成纤维”制成并经过热处理。超越性的技术优势，确保了产品的抗冲击能力、承载能力、韧性和延伸率，进一步提高了客户的使用安全性与使用寿命。产品满足“EN/ISO/DIN/BS/JIS/ASTM/GB”等国际/国家相关标准要求，破断强力质量等级达到G80级/G100级技术要求，可根据客户要求研发设计生产非标准类产品。北京猎鹰生产制造厂区车间设备总览：

"Beijing lieying" professional R & D, production and manufacture of lifting cable products (electric chain hoist class / disc motor class / lifting chain class / lifting rope accessories class / lifting reclosing fiber sling class), the five categories of products have the industry unique "optimization level of process layout", products are made of "high quality alloy steel / high quality high strength synthetic fiber" and heat treatment. The technical advantage of transcendence ensures the impact resistance, bearing capacity, toughness and elongation of the product, and further improves the safety and service life of the customer. The product meets the requirements of international / national standards such as "EN/ISO/DIN/BS/JIS/ASTM/GB", and the breaking strength quality grade reaches G80/ G100 level technical requirements, and can develop and produce non-standard products according to customer requirements. Beijing lieying manufacturing plant workshop equipment overview:



可靠性
可用性
优势

更安全
更好的服务

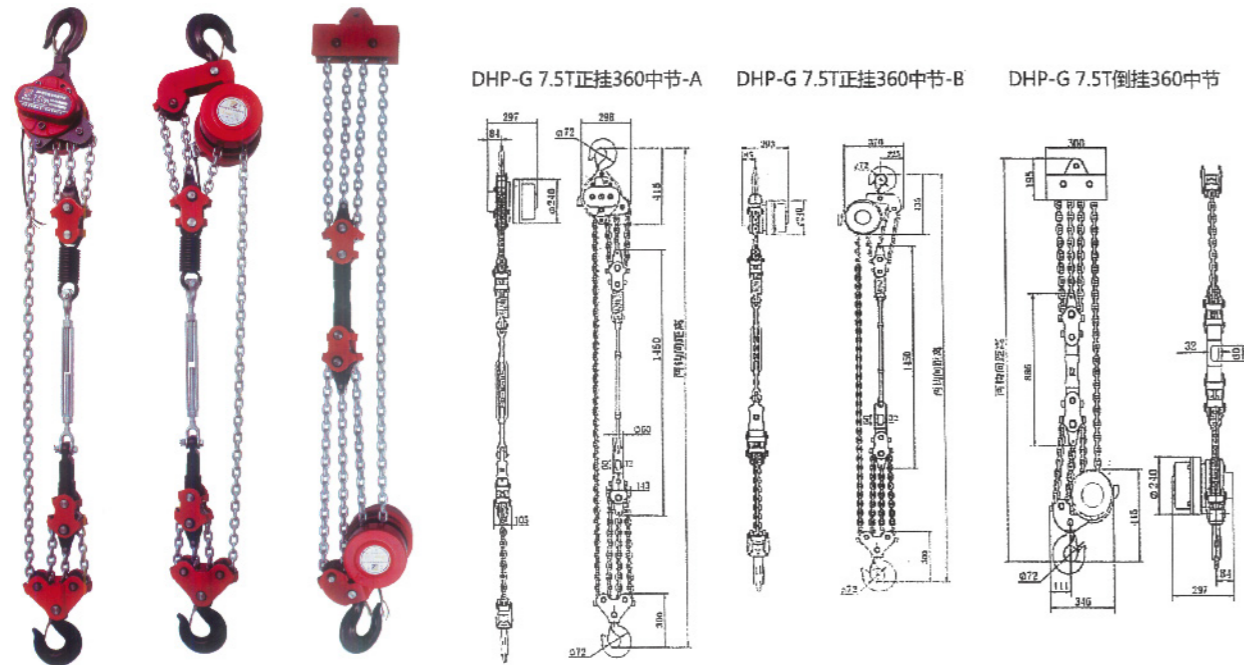
一、新型环链电动提升机系列

New Ring Chain Electric Hoist Series

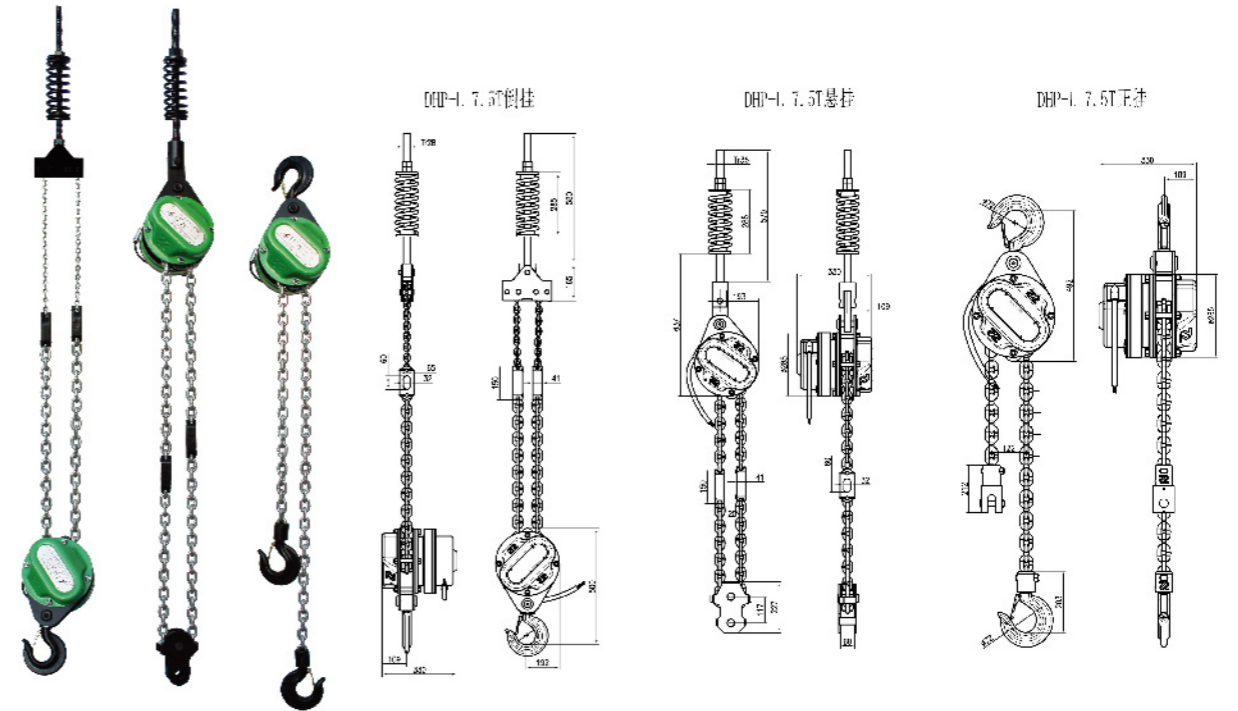
DHP-G/DHP-L型环链电动提升机是一种轻小起重机械，它具有起吊速度慢，机体质量轻，机件硬度高，耐磨损，噪音小，散热性好的特点。由于在空间较小的工作场所使用更是灵活迅捷，还适合于建筑工程领域的爬架，爬模的提升，大型油罐的群吊广泛用于各行各业的加工车间、仓库、码头及各种现代化的生产流水线，装配线。在空间较小的工作场所使用更是灵活迅捷，安全方便，还适合于建筑工程领域的爬架，爬模的提升，大型油罐的群吊。产品严格按照国家标准生产，产品全部通过国家的标准认证。

DHP-G/DHP-L type ring chain electric hoist is a light and small lifting machine, it has the characteristics of slow lifting speed, light body weight, high hardness of machine parts, wear resistance, low noise and good heat dissipation. Because it is more flexible and quick to use in the less spaced workplace, it is also suitable for the climbing frame in the field of construction engineering, and the lifting of climbing mold, the group crane of large oil tank is widely used in the processing workshop, warehouse, wharf and various modern production lines and assembly lines of various industries. In the smaller space in the workplace use is more flexible and fast, safe and convenient, but also suitable for the construction of the field of climbing, climbing mold lifting, large oil tank group crane. The products are produced strictly according to the national standards, and the products are all certified by the national standards.

DHP-G型环链电动提升机 DHP-G Type Chain Electric Hoist



DHP-L型环链电动提升机 DHP-L Type Chain Electric Hoist



可靠性
可用性
优势

更安全
更好的服务

型号 Model	DHP-G7.5T正挂360中节-A	DHP-G7.5T正挂360中节-B	DHP-G7.5T倒挂360中节
额定载荷 Rated load (t)	7.5	7.5	7.5
试验载荷 Test load (t)	9.5	9.5	9.5
电机功率 Motor power (kw)	0.5	0.5	0.5
电源电压 Supply voltage(V Hz)	380 50	380 50	380 50
提升速度 Lifting speed (mm/min)	120	120	120
标准两钩间距离 Standard distance between two hooks (m)	8	8	8
最大起升行程 Maximum Lift Trip (m)	5.83	5.81	6.50
起重链条行数 Number of rows in the lifting chain	4	4	4
链条直径D Chain Diameter D (mm/min)	10	10	10

型号 Model	DHP-L7.5T倒挂	DHP-L7.5T悬挂	DHP-L7.5T正挂
额定载荷 Rated load (t)	7.5	7.5	7.5
试验载荷 Test load (t)	9.5	9.5	9.5
电机功率 Motor power (kw)	0.5	0.5	0.5
电源电压 Supply voltage(V Hz)	380 50	380 50	380 50
提升速度 Lifting speed (mm/min)	130	130	130
标准两钩间距离 Standard distance between two hooks (m)	8	8	8
最大起升行程 Maximum Lift Trip (m)	7.10	7.03	7.20
起重链条行数 Number of rows in the lifting chain	2	2	1
链条直径D Chain Diameter D (mm/min)	13.5	13.5	13.5

二、环链电动葫芦系列

Electric Chain Hoist Series

DHP型电动葫芦 DHP Type Electric Hoist

DHP型电动葫芦因主要用于大型油罐，建筑爬架，所以又称群吊电动葫芦。DHP型群吊电动葫芦是北京猎鹰起重设备有限公司在生产HSZ型手拉葫芦的基础上改进设计而成的，采用盘式制动电机作动力，行星减速器减速。为大型油罐焊接安装必备起重设备，DHP型群吊电动葫芦具有结构紧凑、体积小、重量轻、效率高、使用方便、制动可靠、维护简单等特点。

DHP型群吊电动葫芦适用于低速小行程的物料装卸、设备安装、矿山及工程建筑等方面，具有起吊速度慢，机体重量轻，机件硬度高，磨损小的特点。它广泛用于各行各业的加工车间、仓库、码头、及各种现代化的生产流水线，装配线。在空间较小的工作场所使用更是灵活迅捷，安全方便，还适合于建筑工程领域的爬架，模具的提升，大型油罐的群吊，具有当代世界先进水平。

DHP electric hoist is mainly used for large oil tank, building climbing frame, so it is also called group hoist electric hoist. DHP group hoist electric hoist is designed by Beijing Falcon Lifting Equipment Co., Ltd. on the basis of the production of HSZ hand-drawn hoist, using disk brake motor as power, planetary reducer deceleration. necessary lifting equipment for large oil tank welding installation, dhp type group crane electric hoist has the characteristics of compact structure, small size, light weight, high efficiency, convenient use, reliable braking and simple maintenance.

DHP type group hoist electric hoist is suitable for low speed and small stroke material handling, equipment installation, mine and engineering construction, etc. It has the characteristics of slow lifting speed, light body weight, high hardness of machine parts and small wear. It is widely used in various industries processing workshop, warehouse, wharf, and various modern production lines, assembly lines. The use in the smaller space workplace is more flexible and quick, safe and convenient, but also suitable for the construction engineering field of climbing frame, mold lifting, large oil tank group crane, with the advanced level of the contemporary world.



DHS型环链电动葫芦 DHS Type Electric Chain Hoist

DHS型环链电动葫芦是一种新型小型起重设备；是起吊、运送、装卸货物、工件的理想设备。它广泛用于各行各业的加工车间、仓库、码头、建筑业、各类商店及各种商店及各种现代化的生产流水线，装配线。在空间较小的工作场所使用更是灵活迅捷，安全方便。DHS型环链电动葫芦具有当代世界先进水平。在国际市场上享有盛誉。

DHS type ring chain electric hoist is a new type of small lifting equipment; it is an ideal equipment for lifting, transporting, loading and unloading goods and workpieces. It is widely used in all kinds of processing workshops, warehouses, docks, construction industry, various stores and various modern production lines, assembly lines. Use in smaller workplaces is more flexible and quick, safe and convenient. DHS type ring chain electric hoist has the advanced level in the contemporary world. prestigious in the international market.



参数名称 (单位) Parameter Name (Unit)	DHS1	DHS2	DHS3	DHS5	DHS10
额定提升重量 Rated Lifting Weight (t)	1	2	3	5	10
电机型号 Type of motor	YHPE500-4	YHPE500-4	YHPE500-4	YHPE500-4	YHPE500-4
电源电压 Use of power (V, Hz)	380V 50Hz				
接电持续率 Electricity Duration (JC)	40%	40%	40%	40%	40%
电机转速 Motor speed (r/min)	1380	1380	1380	1380	1380
提升速度 Lifting speed (m/min)	2.2	1.8	1.1	0.9	0.45
起升高度 Lifting height (m)	3-12				
链条行数 Number of chain rows	1	1	2	2	4
整机重量 Machine weight (kg)	3m: 36 6m: 40	45	42	57	95
装箱尺寸 Box size (cm)	50×32×28	50×32×30	50×32×30	50×32×32	60×32×32

型号 Model	5T	7.5T	10T	20T	30T
额定载荷 Rated load (ton)	5	7.5	10	20	30
试验载荷 Test load (t)	6.25	9.5	12.5	25	37.5
电机功率 Motor power (kw)	0.5	0.5	0.5	0.5	0.75
电源电压 Supply voltage	380V 50Hz				
提升速度 Lifting speed (m/min)	0.18	0.12	0.09	0.09	0.06
两钩间最小距离 Minimum distance between two hooks (mm)	600	660	730	1040	1480
起重链条行数 Falls of chain	2	3	4	8	12
标准起升高度 Standard lifting height (m)	3				
起重链条圆钢直径 Dia of lifting chainr (mm)	10	10	10	10	10
净重 N.W (kg)	58	70	95	195	285
装箱毛量 G.W(kg)	69	80	108	225	325
装箱尺寸长×宽×高 Packing size L×W×H (cm)	46×42×42	46×42×42	54×46×42	74×70×45	95×77×45
每增加一米增加重量 Added weight per 1m lift (kg)	4.4	6.6	8.8	17.6	25.2

可靠性
可用性
优势

更安全
更好的服务

KBK型环链电动葫芦 KBK Type Electric Chain Hoist



- ◆ 高效、质轻电机，无石棉刹车系统，低能耗。
- ◆ 冲压钢构壳体，轻巧而坚固。
- ◆ 高强度安全吊钩，承受意外超负荷冲出不会发生断裂，只是逐渐变形。
- ◆ 轻功、美观而耐用的塑制链条。
- ◆ 极限开关：
吊上吊下都有极限开关装置，使电机自动停止，反防止链条炒出，确保安全。
- ◆ 逆相保护装置：特殊电线装置，当电源接线错误时，控制电路无法工作。

型号 Model	H	A	B	D	E
KBK0.5-1	635	460	230	288	165
KBK01-01	650	520	260	300	176
KBK01-02	660	460	230	288	165
KBK1.5-01	770	615	295	430	265
KBK02-01	770	615	295	430	265
KBK02-02	815	520	260	300	236
KBK2.5-01	830	615	295	430	265
KBK03-01	830	615	295	430	265
KBK03-02	930	615	295	430	320
KBK03-03	940	520	260	350	205
KBK05-02	1015	615	295	430	325
KBK7.5-03	1200	615	295	505	320
KBK10-04	1190	630	315	890	445

HHB型环链电动葫芦 HHB Type Electric Chain Hoist



HHXG型环链电动葫芦 HHXG Type Electric Chain Hoist

特点：

- ◆ 额定载荷从500kg至5T；
- ◆ 采用日本FEC高品质起重链条；
- ◆ 高强度安全吊钩确保无断裂；
- ◆ 带过热保护的轻便高效电机；
- ◆ 控制按钮采用24V电压，确保安全使用；
- ◆ 具有限位开关；
- ◆ 具有限载装置；
- ◆ 单相三相电源均可使用；
- ◆ 通过CE认证；
- ◆ IP54防护等级，确保电机防水防尘。

Features:

- ◆ The rated load ranges from 500 kg to 5 T ;
- ◆ Adopt Japanese FEC high quality lifting chain ;
- ◆ High strength safety hooks to ensure no breakage ;
- ◆ Portable and efficient motor with overheating protection ;
- ◆ The control button uses a 24V voltage to ensure safe use ;
- ◆ With a limit switch ;
- ◆ A load-limiting device ;
- ◆ Single-phase three-phase power can be used ;
- ◆ CE certification ;
- ◆ IP54 protection grade , ensure the motor waterproof and dustproof .



可靠性
可用性
优势

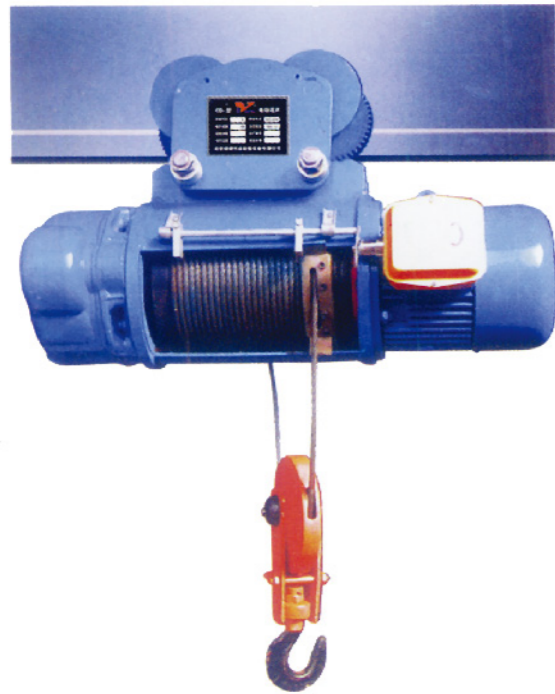
更安全
更好的服务

CD1、MD1型钢丝绳电动葫芦 CD1、MD1 Type wire rope Electric Hoist

CD1、MD1型电动葫芦具有结构紧凑、自重轻、体积小、操作方便等特点，是一种轻小型起重设备。它可以装在葫芦单梁、桥式起重机、门式起重机、悬臂起重机等多种起重机上。稍加改动就可以作卷扬机使用。因此，它是工厂、矿山、港口、仓库、货场、商店等常用的起重设备之一，是提高劳动效率、改善劳动条件的必备机械。CD1型电动葫芦的起升速度为常速，可以满足一般场合的使用要求。

CD1, MD1 electric hoist with compact structure, light weight, small size, easy to operate and so on, is a light and small lifting equipment. It can be installed in gourd single beam, bridge crane, portal crane, cantilever crane and many other cranes. A few changes can be used for a hoist. Therefore, it is one of the commonly used lifting equipment in factories, mines, ports, warehouses, freight yards, shops and so on, and it is a necessary machinery to improve labor efficiency and improve labor conditions. The lifting speed of CD1 electric hoist is constant speed, which can meet the requirements of general occasions.

CD1



MD1



起重量 Hoisting capacity (T)	起升高度 Lifting height (m)	起升速度 Lifting speed (m/min)	运行速度 Running speed (m/min)	电源电压 Supply voltage (V/Hz)	接合次数 Num ber of juncti ons	钢丝绳 wire rope 规格 Specifications	结构 structure	工字钢型号 I-beam type	最小曲率半径 Minimum radius of curvature	电动机 Electric moto					
										主起升 Rise of Lord	副起升 Secondary Rise	运行 Move	功率 Power	转速 Speed	功率 Power
0.5	6.9 12 18	8/0.8	20/30	380 50	120	5.1-6×19+NF-1770-ZS	股1+6+12	16-28b	11.2	0.8	1380	0.2	1380	0.2	1380
1	6.9 12 18 24 30	8/0.8	20/30	380 50	120	7.4-6×37+NF-1770-I-S	股1+6+12+18	16-28b	11.2 1.8 2.5 3.3	1.5	1380	0.2	1380	0.2	1380
2	6.9 12 18 24 30	8/0.8	20/30	380 50	120	11-6×37+NF-1670-ZS	股1+6+12+18	20a-32c	1.2 1.5 2.2 2.5 3.5	3.0	1380	0.4	1380	0.4	1380
3	6.9 12 18 24 30	8/0.8	20/30	380 50	120	13-6×37+NF-1670-I-ZS	股1+6+12+18	20a-45c	1.2 1.5 2.2 2.5 3.5	1.5	1380	0.8	1380	0.4	1380
5	6.9 12 18 24 30	8/0.8	20/30	380 50	120	15-6×37+NF-1670-I-ZS	股1+6+12+18	28a-63c	1.5 2.5 3.4	7.5	1400	0.8	1380	0.8	1380
10	6.9 12 18 24 30	7/0.7	20/30	380 50	120	15-6×37+NF-1670-I-ZS	股1+6+12+18	28a-63c	2.5 3.3 3.5 4.5 6 7.2	13	1400	1.5	1380	0.8	1380

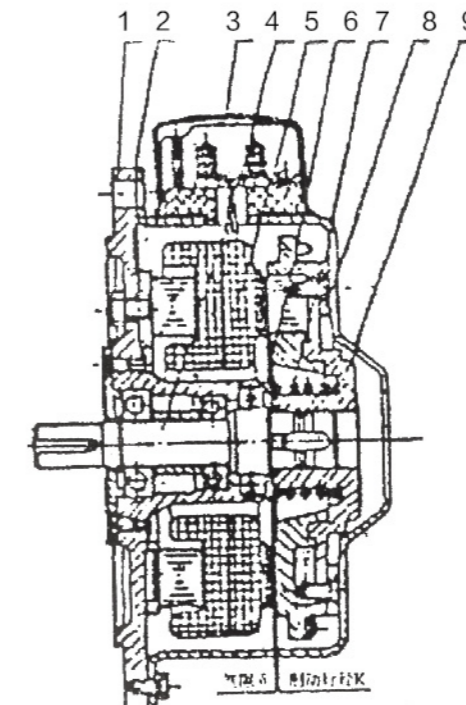
三、盘式电机/微型电动葫芦系列

Disk Type Motor / Miniature Electric Hoist Series

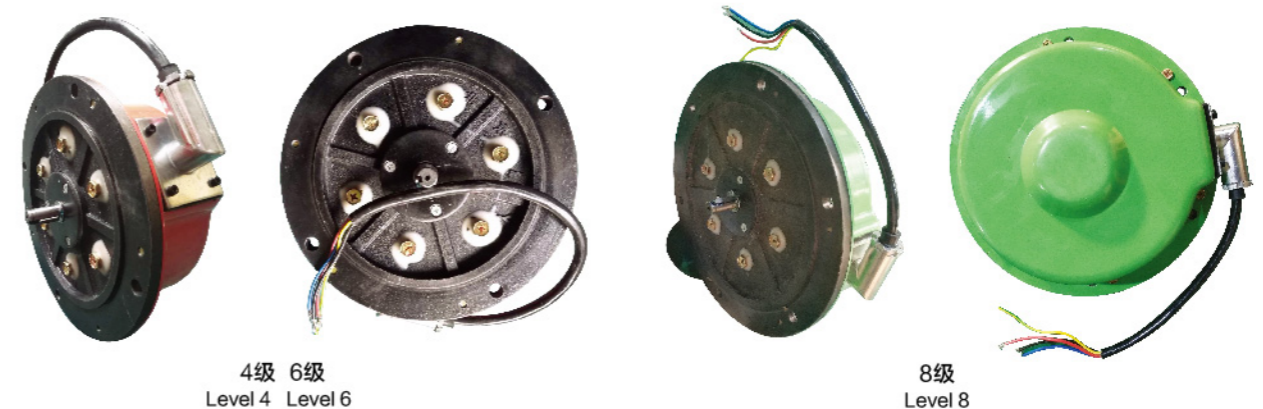
三相盘式制动异步电动机 Three-phase Disc Brake Asynchronous Motor

三相盘式制动异步电动机系全封闭、自冷式、定、转子为圆盘状的轴向磁场新型电动机。转子上装有圆盘制动环，轴向尺寸短，是Y系列同类产品轴向长度的0.5倍。该电机具有通电正常运行和断电瞬时刹停的功能，技术性能先进，结构新颖，轴向尺寸短、制动力矩大、制动迅速、定位准确、轴向无串动。使用方便，维护简单。该电机用于YPEH系列环链电动提升机，有较大的起动力矩倍数和制动力矩，制动安全可靠，适用于物料的提升，工作制为S2。

The three-phase disc brake asynchronous motor is a new type of axial magnetic field motor which is completely closed, self-cooled, fixed and rotor. The rotor is equipped with a disc brake ring with a short axial size and is 0.5 times the axial length of the Y series similar products. The motor has the function of power-on normal operation and power-off instantaneous brake stop, advanced technical performance, novel structure, short axial size, large braking torque, rapid braking, accurate positioning, no string movement in the axial direction. Easy to use and easy to maintain. The motor is used in YPEH series ring chain electric hoist with large starting torque multiple and braking torque, safe and reliable braking, suitable for material lifting, working system is S2.



- 1、机座
 - 2、机壳
 - 3、接线盒
 - 4、转轴
 - 5、定子
 - 6、调整垫片
 - 7、制动弹簧
 - 8、制动摩擦片
 - 9、转子
1. Machine seat
2. housing
3. junction box
4. rotary shaft
5. stator
6. adjusting gasket
7. brake spring
8. brake friction plate
9. rotor



4级 6级
Level 4 Level 6

8级
Level 8

可靠性
可用性
优势

更安全
更好的服务

三相盘式制动异步电动机 Three-Phase Disc Brake Asynchronous Motor

型号(YPEF) Model

额定电压: 380V-50Hz Rated voltage		额定电流: 1.66A Rated current		接法: Y Connection		防护等级: IP54 Levels protection		绝缘等级: B Insulation grade		冷却方式: IC410 cooling-down method	
参数 Parameter	功率 Power (W)	转速 Turn Speed (R.P.M)	工作方式 Operate mode	制动力矩 Brake moment (N.m)	转动惯量 Moment of inertia (Kn.M ²)	效率 Effect rate (%)	功率因数 Power factor (cosΦ)	堵转电流 Locked rotor current (A)	堵转转矩 Locked-rotor torque	最大转矩 Maximum torque	气隙 Air gap (mm)
250-4	250	1420	S2-30min	≥3.5	≤0.018	64	0.65	5.0	1.8	2.0	0.25-0.30
370-4	370	1420	S2-30min	≥4.2	≤0.035	67	0.68	5.0	1.8	2.0	0.25-0.30
550-4	550	1420	S2-30min	≥6.9	≤0.035	69	0.68	5.0	1.8	2.4	0.25-0.35
750-4	750	1420	S2-30min	≥10.4	≤0.040	71	0.68	5.0	1.8	2.4	0.30-0.35
1100-4	1100	1420	S2-30min	≥15.2	≤0.137	72	0.68	6.0	2.0	2.4	0.30-0.35
1500-4	1500	1420	S2-30min	≥20.8	≤0.280	73	0.70	6.0	2.0	2.4	0.40-0.45

型号(YPEF) Model

额定电压: 380V-50Hz Rated voltage		额定电流: 1.95A Rated current		接法: Y Connection		防护等级: IP55 Levels protection		绝缘等级: F Insulation grade		冷却方式: IC410 cooling-down method	
参数 Parameter	功率 Power (W)	转速 Turn Speed (R.P.M)	工作方式 Operate mode	制动力矩 Brake moment (N.m)	转动惯量 Moment of inertia (Kn.M ²)	效率 Effect rate (%)	功率因数 Power factor (cosΦ)	堵转电流 Locked rotor current (A)	堵转转矩 Locked-rotor torque	最大转矩 Maximum torque	气隙 Air gap (mm)
250-6	250	960	S2-30min	≥3.5	≤0.018	64	0.65	5.0	1.8	2.0	0.25-0.30
370-6	370	960	S2-30min	≥4.2	≤0.035	67	0.68	5.0	1.8	2.0	0.25-0.30
550-6	550	960	S2-30min	≥6.9	≤0.035	69	0.68	5.0	1.8	2.4	0.25-0.35
750-6	750	960	S2-30min	≥10.4	≤0.040	71	0.68	5.0	1.8	2.4	0.30-0.35
1100-6	1100	960	S2-30min	≥15.2	≤0.137	72	0.68	6.0	2.0	2.4	0.30-0.35
1500-6	1500	960	S2-30min	≥20.8	≤0.280	73	0.70	6.0	2.0	2.4	0.40-0.45

型号(YPEH) Model

额定电压: 380V-50Hz Rated voltage		额定电流: 1.95A Rated current		接法: Y Connection		防护等级: IP55 Levels protection		绝缘等级: F Insulation grade		冷却方式: IC410 cooling-down method	
参数 Parameter	功率 Power (W)	转速 Turn Speed (R.P.M)	工作方式 Operate mode	制动力矩 Brake moment (N.m)	转动惯量 Moment of inertia (Kn.M ²)	效率 Effect rate (%)	功率因数 Power factor (cosΦ)	堵转电流 Locked rotor current (A)	堵转转矩 Locked-rotor torque	最大转矩 Maximum torque	气隙 Air gap (mm)
250-8	250	720	S2-30min	≥3.5	≤0.018	64	0.65	5.0	1.8	2.0	0.25-0.30
370-8	370	720	S2-30min	≥4.2	≤0.035	67	0.68	5.0	1.8	2.0	0.25-0.30
550-8	550	720	S2-30min	≥6.9	≤0.035	69	0.68	5.0	1.8	2.4	0.25-0.35
750-8	750	720	S2-30min	≥10.4	≤0.040	71	0.68	5.0	1.8	2.4	0.30-0.35
1100-8	1100	720	S2-30min	≥15.2	≤0.137	72	0.68	6.0	2.0	2.4	0.30-0.35
1500-8	1500	720	S2-30min	≥20.8	≤0.280	73	0.70	6.0	2.0	2.4	0.40-0.45

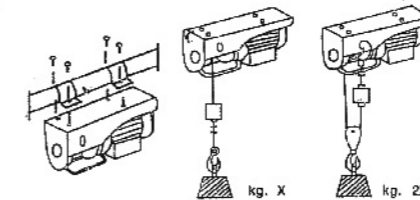
微型电动葫芦系列 Micro Electric Hoist Series

微型电动葫芦, 适用于各种场合吊卸小件货物。结构简单、安装方便、小巧玲珑, 采用单相电作动力源。广泛应用于现代化工业生产线、流水线、仓库、商场、饭店、家庭、装修和搬运、空间较狭窄的场所等。也是定柱式、墙壁式悬臂起重机的配套产品。

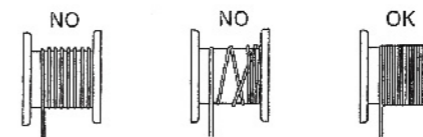
Micro electric hoist, suitable for lifting and unloading small goods in various occasions. Simple structure, easy installation, small and exquisite, single phase electric power source. Widely used in modern industrial production lines, assembly lines, warehouses, shopping malls, restaurants, homes, decoration and handling, space narrower places and so on. Is also fixed column type, wall type cantilever crane matching products.

产品型号 Product model	使用方式 Usage mode	额定起重量 Rated load weight (kg)	起升高度 Lifting altitude (m)	起升速度 Lifting speed (m/min)	输入功率 Interiorinput power (W)	电压 voltage (V)	频率 Frequency (Hz)	重量 Weight (kg/台)
PA200	单钩/双钩	100/200	12/6	10/5	550	220	50	11.0
PA250	单钩/双钩	125/250	12/6	10/5	550	220	50	11.5
PA300	单钩/双钩	150/300	12/6	10/5	600	220	50	12.0
PA400	单钩/双钩	200/400	12/6	10/5	980	220	50	16.5
PA500	单钩/双钩	250/500	12/6	10/5	1020	220	50	17.0
PA600	单钩/双钩	300/600	12/6	10/5	1250	220	50	17.5
PA800	单钩/双钩	400/800	12/6	10/5	1500	220	50	18.5
PA999	单钩/双钩	500/1000	12/6	8/4	1800	220	50	26.0

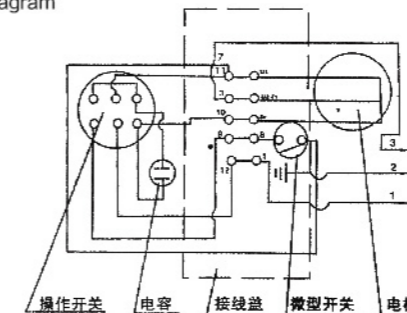
安装图
Drawing for fixation



钢丝绳缠绕方法
Twinged manner of rope



电动葫芦电气接线图
Electrical wiring diagram of electric hoist



可靠性

可用性
优势

更安全

更好的服务

多功能电动提升机 Multi-function Electric Hoist

多功能电动提升机紧凑型设计，安装方便；经济实惠，应用范围广。具有制动速度快，体积小，重量轻，结构紧凑，使用方便，维修简便的特点。本产品严格按照国家3包执行，产品质量由中国人民保险公司(PICC)承保，请放心使用。

多功能电动提升机的应用领域：用于住宅建筑、吊灰砖、挖井提土、货场仓库、商场、饭店、个体作坊小型厂矿，可作任何角度的搬移、起吊、装卸，是目前国内理想的小型提升工具，还广泛用于中小型住宅，高层建筑装修，吊楼板，打井提土，仓库厂吊物等单位或个人必备的常用机械。

多功能电动提升机，采用锥形转子电动机和普通电动机为动力，与减速机结构组合带动卷筒，达到升降运转。多功能电动提升机具有制动速度快，体积小，重量轻，结构紧凑，使用安装方便，应用范围广，维修简便的特点。具有电动葫芦和卷扬机的主要功能。

多功能提升机是电动葫芦的一种，适用于地面和空中使用，广泛用于建筑行业。具有输送量大，提升高度高，运行平稳可靠等几大优点。

用于住宅建筑、吊灰砖、挖井提土、货场仓库、商场、饭店、个体作坊小型厂矿，可作任何角度的搬移、起吊、装卸，是目前国内使用度比较高的小型提升工具，还广泛用于中小型住宅，高层建筑装修，吊楼板，打井提土，仓库厂吊物单位或个人常用的小型起重维修机械。



产品型号 Product model	使用方式 Usage mode	额定电压 Rated voltage (V)	功率 Power (W)	额定起重量 Rated load weight (Kg)	起升速度 Lifting speed (m/min)	起升高度 Lifting altitude (m)	钢丝绳直径 Wire rope diameter (mm)	净重 N.W (kg)
300-600	单绳	220	0.6	300	16	30-60	5	34
	双绳			600	8			
500-1000	单绳	220	1.1	500	14	30-100	6	49
	双绳			1000	7			
500-1000	单绳	380	1.5	500	16	30-100	6	55
	双绳			1000	8			
750-1500	单绳	380	1.5	750	16	30-100	7.7	65
	双绳			1500	8			
1000-2000	单绳	380	3.0	1000	16	30-100	11	80
	双绳			2000	8			
400-800	单绳	220	1.6	400	14	30-60	6	40
	双绳			600	7			

注：净重以30米绳为准。其它规格也可订做。
Note: The net weight is 30m rope. Other specifications can also be customized.

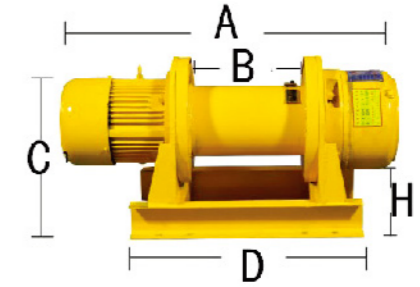
电动卷扬机 Electric Hoist

电动卷扬机使用注意事项：

- 筒上的钢丝绳应排列整齐，如发现重叠和斜绕时，应停机重新排列。严禁在转动中用手、脚拉踩钢丝绳。钢丝绳不许完全放出，少应保留三圈。
- 钢丝绳不许打结、扭绕，在一个节距内断线超过10%时，应予更换。运送物放下。
- 作业完毕、应将料盘落地、关锁电箱。
- 严禁超载使用。即超过大承载吨数。

Attention to the use of electric hoists:

- wire rope on the cylinder should be arranged neatly, if overlapping and oblique winding is found, it should stop and rearrange. It is strictly forbidden to step on the wire rope with hands and feet in the rotation. Wire rope should not be fully released, less should be retained three laps.
- the wire rope is not allowed to knot, twist around, in a pitch break more than 10%, should be replaced. Drop the delivery.
- At the end of the operation, the tray shall be landed and the electric box shall be closed.
- Overloading is strictly prohibited. that is, exceeding the large bearing tonnage.



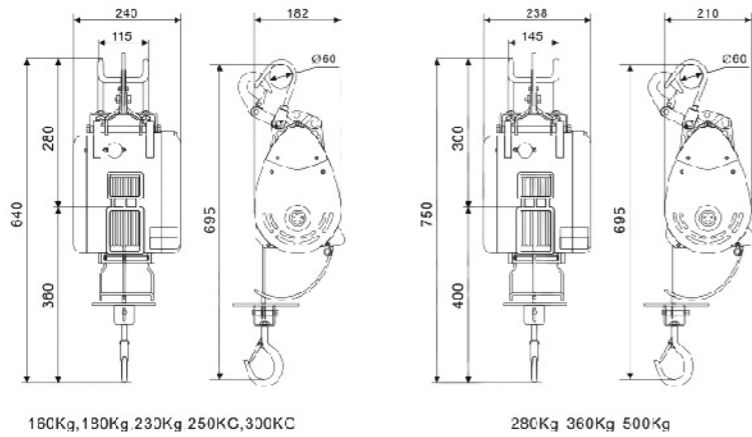
产品型号 Product model	使用方式 Usage mode	额定电压 Rated voltage (V)	功率 Power (W)	额定起重量 Rated load weight (T)	起升速度 Lifting speed (m/min)	裸机重量 Naked machine weight (Kg)	钢丝绳直径 Wire rope diameter (mm)	槽钢型号 Channel steel model	A (cm)	B (cm)	C (cm)	D (cm)	H (cm)
1T	单绳	380	1.5	0.5	16	80	7.7	8	76	25	40	53	33
	双绳			1	8								
2T	单绳	380	3	1	16	140	11	10	85	26	54	60	43
	双绳			2	8								
3T	单绳	380	4.5	1.5	16	170	13	10	94	29	57	60	45
	双绳			3	8								
4T	单绳	380	7.5	2.5	16	250	15	10	106	32	63	60	53
	双绳			3	8								

可靠性
可用性
优势

更安全
更好的服务

小金刚 Little King Kong

- ◆ 小金刚产品分线控款和遥控款
- ◆ 线控款手柄线长6米，遥控款遥控可控范围150米
- ◆ 220V电压 体积小 重量轻 携带方便
- ◆ Small King Kong products branch control and remote control
- ◆ Line control handle line length 6 meters, remote control remote control range 150 meters
- ◆ 220V voltage Small size In light weight Easy to carry



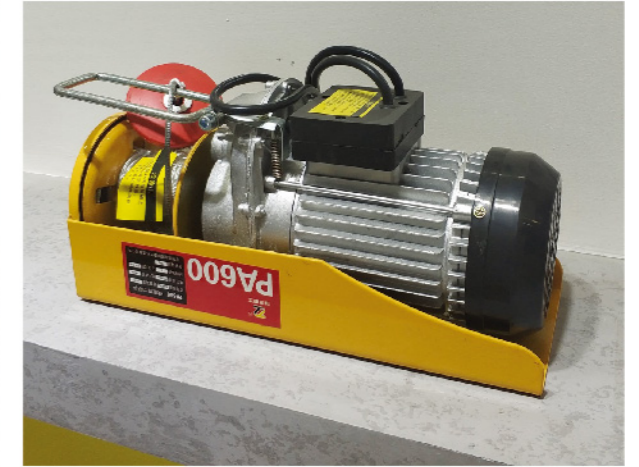
可靠性
可用性
优势

起重/米 Lifting /m	功率 Power (W)	钢丝绳直径 Wire rope diameter (mm)	提升高度 Promote altitude (m)	净重 N.W (kg)
160/30	1200	4	19	14
180/30	1300	5	19	15
230/30	1300	5	19	16
250/30	1600	5	19	16
300/30	1600	5	19	16.5
500/30	1600	6	13	19.5
280/60	1300	5	13	18
360/60	1500	5	13	18.5

PA系列微型电动机 PA Series Micro motors



PA400



PA600



PA800



PA999



新型二代提升机
New second generation hoist



1.5T单相多功能电动提升机
1.5T Single-phase multifunctional electric hoist



新型室外吊运机静音王
Voice King New Outdoor Hoist

更安全
更好的服务

四、手拉葫芦/手扳葫芦系列

Hand-drawn gourd / Hand wrench gourd Series

HSZ-80A/B系列手拉葫芦 HSZ-80A/B Series Hand-Drawn Gourd



HSZ-80A/B系列手拉葫芦是我厂最新推出的，设计先进，质量可靠，使用性能优越的新一代产品，它具有HSZ-80系列手拉葫芦的优良性能，并突破了传统的圆形结构，采用了等边三角弧形，使产品造型更加新颖美观，符合当代潮流。

HSZ-80A/B系列手拉葫芦广泛用于工厂，矿山，码头，仓库建筑工地，农业生产等各个领域，用以升降货物和吊装设备。尤其是在无电源或场地狭小的情况下作业。更显示出优越性。该系列手拉葫芦可与单轨行车配套使用组成起重运输小车，用于单轨架空运输，或用于手动单梁起重机和悬臂式起重机上。

HSZ-80A/B系列手拉葫芦是依据JB/T7334-94标准设计制造的，主要零部件和整机性能均经严格的检查和测试，产品的可靠度大大提高，保证使用安全。

HSZ-80A/B系列手拉葫芦主要特点：

- ◆ 采用Z（重）级工作级别，性能可靠，经久耐用。
- ◆ 采用800Mpa高强度起重链条，安全系数高，使用寿命长。
- ◆ 结构紧凑合理，外形美观新颖。
- ◆ 传动平稳，效率高，手拉力小。
- ◆ 双棘爪、双导轮结构，更加安全可靠。
- ◆ 体积小，重量轻，使用简便。

规格型号	额定起重重量	标准起重高度	试验载荷	最大拉力	起重链条行数	起重链条直径	A	B	C	D	K	净重	包装尺寸	每增加一米增加重量
Specifications model	Rated hoisting capacity (tons)	Standard Lifting Height (m)	Test load (KN)	Maxim um pull (N)	Falls of chain	Lifting chain diameter (mm)	(mm)	(mm)	(mm)	(mm)	(mm)	N.W (kg)	Packing measurement (cm)	Added weight per 1m lift (kg)
HSZ-0.5	0.5	3	7.5	225	1	5	130	140	270	35	26	7	22×15×18	1.5
HSZ-1	1	3	15	300	1	6	151	162	317	41	29	11.5	25×18×18.5	1.8
HSZ-1.5	1.5	3	22.5	310	1	7.1	151	188	399	46	36	14	30×20×20	2.1
HSZ-2	2	3	30	310	1	8	181	208	414	50	36	20	29.5×22.5×22.5	2.3
HSZ-2S	2	3	30	300	2	6	150	170	475	46	36	15.3	29.5×22.5×22.5	3.6
HSZ-3	3	3	45	350	2	7.1	151	212	465	56	40	21	34×23.5×18.5	4.2
HSZ-5	5	3	75	400	2	9	181	270	636	62	44	38	47.5×28.5×22.5	4.6
HSZ-10	10	3	150	410	4	9	181	365	798	85	62	70	49.5×46.5×25	9.8
HSZ-20	20	3	300	410×2	8	9	181	630	890	110	85	162	64×38×64	19.6
HSZ-30	30	3	450	410×2	12	10	350	680	1380	110	85	230	72×50×68	28.3

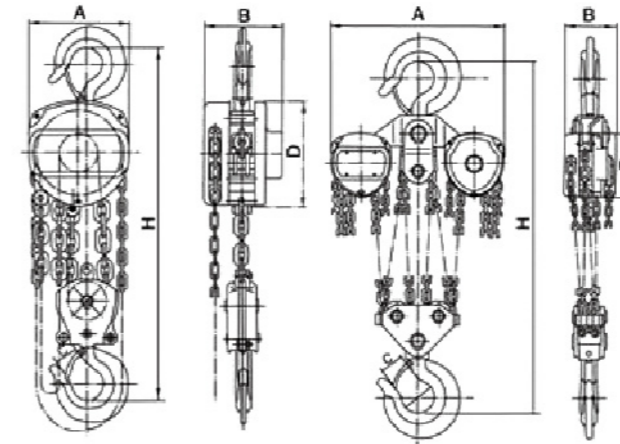
注：除列表外，在12米以内各起重高度，均可订货。

Note: Except the list, within 12 meters of each lifting height, can be ordered.

HS-C型系列手拉葫芦 HS-C Series Hand-Drawn Gourd

HS-C型系列手拉葫芦是公司在HSZ型手拉葫芦的基础上融合世界先进技术改良后产品，除具有HSZ型手拉葫芦的传统特点外，更是一种手拉力小，安全系数高，外形美观，实用性更高的手拉葫芦。

HS-C series hand pull gourd is the company in the HSZ type hand pull gourd on the basis of the integration of the world's advanced technology improved products, in addition to the traditional characteristics of the HSZ type hand pull gourd, but also a small hand pull, high safety factor, beautiful appearance, more practical hand pull gourd.



规格型号	额定起重重量	标准起重高度	试验载荷	两钩间最小距离	满载时手链拉力	起重链条行数	起重链条直径	A	B	C	D	净重	装箱毛重	包装尺寸	每增加一米增加重量
Specifications model	Rated hoisting capacity (t)	Standard Lifting Height (m)	Test load (t)	Minimum distance between two hooks (mm)	Chain pull to lift full load (N)	Falls of chain	Lifting chain diameter (mm)	(mm)	(mm)	(mm)	(mm)	N.W (kg)	G.W (kg)	Packing measurement (cm)	Added weight per 1m lift (kg)
HSZ-0.5	0.5	2.5	0.63	265	221	1	6	125	111	24	134	8	10	28×21×17	1.7
HSZ-1	1	2.5	1.25	306	304	1	6	147	126	28	154	10	13	30×24×18	1.7
HSZ-1.5	1.5	2.5	2	368	343	1	8	186	141	34	192	16	20	34×29×20	2.3
HSZ-2	2	2.5	2.5	444	314	2	6	147	126	34	154	14	17	33×25×19	2.5
HSZ-3	3	3	4	486	343	2	8	183	141	38	192	24	28	38×30×20	3.7
HSZ-5	5	3	6.3	616	383	2	10	215	163	48	224	36	45	45×35×24	5.3
HSZ-10	10	3	12.5	700	392	4	10	360.5	163	64	224	68	83	62×50×28	9.7
HSZ-20	20	3	25	1000	392	8	10	585	191	82	224	150	194	70×45×75	19.4

注：除列表外，在12米以内各起重高度，均可订货。

Note: Except the list, within 12 meters of each lifting height, can be ordered.



可靠性
可用性
优势

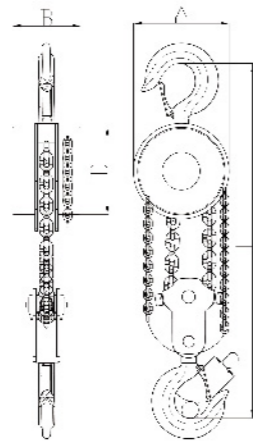
更安全
更好的服务

HSZ型系列手拉葫芦 HSZ Series Hand-Drawn Gourd

HSZ型系列手拉葫芦是一种使用广泛，携带方便的手动起重机械，可用于工业农业、建筑业、矿业等的机械安装、货物起吊、车辆装卸等，尤其适用于露天及无电源作业。

HSZ型系列手拉葫芦与各式手拉单轨车配套使用组成手拉起重运输小车，适用于单轨架空运输，手动单梁桥式起重机和悬臂式起重机上。

HSZ series hand pull hoist is a widely used, easy to carry manual lifting machinery, can be used in industrial agriculture, construction, mining and other mechanical installation, cargo lifting, vehicle loading and unloading, especially for open air and no power operation. HSZ series hand-pulling hoist and each type of hand-pulling monorail carriage are used together to form a hand-pulling which is suitable for monorail overhead transportation, manual single-beam bridge crane and cantilever crane.



可靠性
可用性
优势

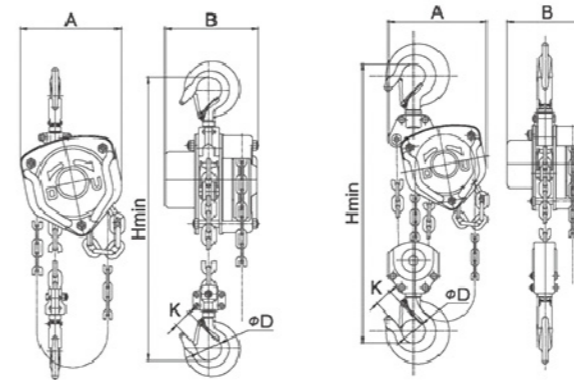
规格型号 Specifications model	额定起重重量 Rated hoisting capacity (t)	标准起重高度 Standard Lifting Height (m)	试验载荷 Test load (t)	两钩间最小距离 Minimum distance between two hooks (mm)	满载时手拉拉力 Chainpull to lift full load (N)	起重链条数 Number of lifting chains	起重链条直径 Lifting chain diameter (mm)	A	B	C	D	净重 N.W (kg)	装箱毛重 G.W (kg)	包装尺寸 Packing measurement (cm)	每增加一米增加重量 Added weight per 1m lift (kg)
HSZ-0.5	0.5	2.5	0.63	270	225	1	6	120	108	24	120	9.5	12	28×21×17	1.7
HSZ-1	1	2.5	1.25	270	309	1	6	142	122	28	142	10	13	30×24×18	1.7
HSZ-1.5	1.5	2.5	2	368	343	1	8	178	139	34	178	16	20	34×29×20	2.3
HSZ-2	2	2.5	2.5	440	314	2	6	142	122	34	174	14	17	33×25×19	2.5
HSZ-3	3	3	4	486	343	2	8	178	139	38	178	24	28	38×30×20	3.7
HSZ-5	5	3	6.3	616	383	2	10	210	162	48	210	36	45	45×35×24	5.3
HSZ-10	10	3	12.5	700	392	4	10	358	162	64	210	68	83	62×50×28	9.7
HSZ-20	20	3	25	1000	392	8	10	580	189	82	210	155	193	70×45×75	19.4

注：除列表外，在12米以内各起重高度，均可订货。
Note: Except the list, within 12 meters of each lifting height, can be ordered.

HSZ-A型系列手拉葫芦 HSZ-A Series Hand-Drawn Gourd

产品特点：1、外罩壳加厚设计，增加凸筋工艺，耐撞击，有效保护内部传动机构。2、手轮罩采用卷边工艺，增加强度，避免卡链和很大的噪音。3、齿轮采用优质合金钢精密锻造加工，并经过热处理后经久耐用，体现高传动效率。4、吊钩采用优质合金材料，经特殊热处理，提高安全警示性，超载时不断裂。

Product features : 1. outer cover shell thickening design, increase the convex reinforcement process, impact resistance, effective protection of internal transmission mechanism. 2. hand wheel cover adopts the crimping process to increase the strength and avoid the clasp and great noise. 3. gear adopts high quality alloy steel precision forging processing, and after heat treatment durable, reflect high transmission efficiency. 4. hook adopts high quality alloy material, after special heat treatment, improve safety warning, and do not break when overload.



更安全
更好的服务

规格型号 Specifications model	额定起重重量 Rated hoisting capacity (tons)	标准起重高度 Standard Lifting Height (m)	试验载荷 Test load (KN)	满载时手拉拉力 Chainpull to lift full load (N)	起重链条数 Number of lifting chains	起重链条直径 Lifting chain diameter (mm)	A	B	D	K	Hmin	净重 N.W (kg)	包装尺寸 Packing measurement (cm)	每增加一米增加重量 Added weight per 1m lift (kg)
HSZ-A-0.5	0.5	3	6.1	200	1	6×18	137	137.5	35	28	300	8.36	22×15×20	1.6
HSZ-A-1	1	3	12.3	320	1	6×18	162	146.5	35.5	26	340	10.6	23×18×20	1.6
HSZ-A-1.5	1.5	3	18.4	360	1	8×24	183	170	45	32.5	410	15.2	28×21×24	2.2
HSZ-A-2	2	3	24.5	365	1	8×24	194	170	42.5	32	440	17.7	28×21×24	2.2
HSZ-A-3	3	3	36.8	385	2	10×30	220	170	50	37	500	24.2	32×21×26	3.6
HSZ-A-5	5	3	61.1	435	2	10×30	288	190	64	46	610	35.8	40×21×26	5.2
HSZ-A-10	10	3	122.5	435	4	10×30	384	190	85	50	800	77.7	50×41×21	9.5
HSZ-A-20	20	3	235.5	435×2	8	10×30	625	209	110	81	1000	162.2	64×38×64	19
HSZ-A-30	30	3	267.5	435×2	12	10×30	691	312	110	81	1380	238.5	72×50×68	27.7
HSZ-A-50	50	3	612.5	435×2	22	10×30	958	496	110	125	2578	1092	110×110×130	49.4

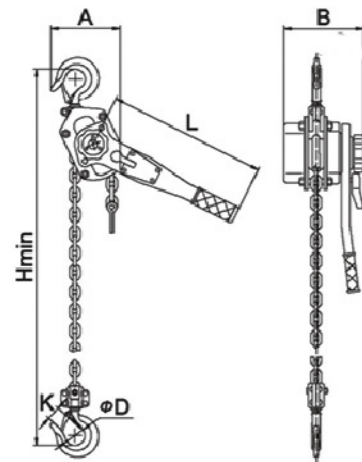
注：除列表外，在12米以内各起重高度，均可订货。
Note: Except the list, within 12 meters of each lifting height, can be ordered.

HSH型手扳葫芦 HSH Type Hand Wrench Gourd

HSH型系列手扳葫芦采用新设计，具有快速调整下吊钩位置的功能，造型新颖，款式别致，机体美观，制动性能良好，工作效率更高，也一直是国内外畅销的优质名牌产品，更是你可靠的帮手。

HSH series hand wrench gourd adopts the new design, has the function of adjusting the hook position quickly, the shape is novel, the style is chic, the body is beautiful, the brake performance is good, the work efficiency is higher, also has been the domestic and foreign best-selling high quality famous brand product, is your reliable helper.

- ◆ 重量轻，体积小，手柄操作力小。
- ◆ 标准配置高强度合金钢起重链条。
- ◆ 经过专门热处理的锻造吊钩，强度高，使用寿命长。
- ◆ 可根据要求配置不同的起重高度。
- ◆ Light weight, small volume and small handle operating force.
- ◆ Standard configuration high strength alloy steel lifting chain.
- ◆ Forging hooks after special heat treatment with high strength and long service life.
- ◆ Different lifting heights can be configured according to requirements.



规格型号 Specifications model	额定起重量 Rated hoisting capacity (tons)	标准起重高度 Standard Lifting Height (m)	试验载荷 Test load (KN)	满载时手扳力 Hand wrench at full load (N)	起重链条行数 Number of lifting chains	起重链条直径 Lifting chain diameter (mm)	A	B	C	D	H	L	K	净重 N.W (kg)	包装尺寸 Packing measurement (cm)	每增加一米增加重量 Added weight per 1m lift (kg)
HSH-0.5	0.5	1.5	7.5	340	1	5	105	78	80	35	260	300	25	4	33×12×9	0.54
HSH-0.75	0.75	1.5	11.25	140	1	6	152	95	128	36	295	256	26	7	33×16×13	0.8
HSH-1	1	1.5	15	185	1	6	152	95	128	36	295	256	26	7	33×16×13	0.8
HSH-1.5	1.5	1.5	22.5	234	1	7.1	175	110	148	43	335	368	33	11	43×18.5×16	1.1
HSH-2	2	1.5	30	251	1	8	175	105	160	46	385	368	36	15.5	44×19×17	1.4
HSH-3	3	1.5	45	362	1	10	195	110	181	50	450	368	37	20	50×20×18	2.2
HSH-6	6	1.5	90	362	2	10	195	115	232	65	542	368	50	28	53×21×21	4.4
HSH-9	9	1.5	112.5	360	3	10	215	130	330	85	700	410	58	47	82×32×21.5	6.6

VT型手扳葫芦 VT Type Hand Wrench Gourd

VT型系列手扳葫芦是多模块结构，使用更安全；

重量轻，体积小，手柄操作力小；

G80合金钢起重链条；

锰钢齿轮组，结构紧凑；

热处理的锻造吊钩，强度高，具有超重延展性。

支持定制，可根据客户要求，配置不同的提升高度。

广泛地应用于造船、电力、运输、建筑、矿山、邮电等行业的设备安装，物品起吊、机件牵拉等。

VT series of hand plate gourd is multi-module structure, more safe to use;

light weight, small volume, small handle operation force;

G80 alloy steel lifting chain;

manganese steel gear set, compact structure;

heat forging hook, high strength, with overweight ductility.

Support customization, can be based on customer requirements, configuration of different elevations.

Widely used in shipbuilding, electricity, transportation, construction, mining, post and telecommunications and other industries of equipment installation, goods lifting, machine parts pull.



型号 Model	0.75	1.5	3	6
起重量 Hoisting capacity (t)	0.75	1.5	3	6
标准起重高度 Standard lifting height (m)	1.5	1.5	1.5	1.5
试验载荷 Test load (t)	9.2	18.4	36.8	73.5
满载时手扳力 Hand wrench at full load (N)	148	216	336	345
起重链条行数 Number of lifting links	1	1	1	2
起重链条直径 Lifting chain diameter (mm)	6.3	7.1	9	9
净重 Net weight (kg)	6.6	11.65	21.1	23.7

可靠性
可用性
优势

更安全
更好的服务

五、电动/手拉行车系列

Electric/hand-held driving series

单轨电动行车（跑车） Monorail Electric Car (Sports Car)

单轨电动行车以电动机驱动，行车与工字钢的轨道下缘处，配以电动葫芦或手拉葫芦便可组成桥式，单梁或悬臂式微型起重机，广泛适用于工厂、矿山、码头、仓库、机械加工、注塑、压铸、冲压、装卸磨具、建筑工地等用于安装机器设备，吊运货物的场合，其配套的起重采用220V单项电源，适用性广泛。

A single-beam or cantilever mini-crane is widely used in factories, mines, wharves, warehouses, machining, injection molding, die-casting, stamping, loading and unloading grinding tools, construction sites and other occasions for the installation of machinery and equipment, lifting goods, its supporting lifting using 220V single power supply, wide applicability.



单轨微型六轮电动行车 Monorail Mini Six-wheel Electric Driving Vehicle

单轨电动行车以电动机驱动，行车与工字钢的轨道下缘处，六轮的设计运行更平稳，因为着力点多了两个，重心就不用原来的4轮上了，更安全。配以电动葫芦或手拉葫芦便可组成桥式，单梁或悬臂式微型起重机，广泛适用于工厂、矿山、码头、仓库、机械加工、注塑、压铸、冲压、装卸磨具、建筑工地等用于安装机器设备，吊运货物的场合，其配套的起重采用220V单项电源，适用性广泛。

Monorail electric driving is driven by electric motor, driving and I-steel track lower edge, the design of the six-wheel operation is more stable, because the focus of two more, the center of gravity does not need to be on the original 4 wheels, more safe. Equipped with electric hoist or hand-drawn hoist can form bridge type, single beam or cantilever type micro crane, widely used in factories, mines, wharves, warehouses, machining, injection molding, die casting, stamping, loading and unloading grinding tools, construction sites and other occasions for the installation of machinery and equipment, lifting goods, its supporting lifting using 220V single power supply, wide applicability.



可靠性
可用性
优势

更安全
更好的服务

型号 Model	TD0.5	TD1
额定载荷 Rated load (t)	0.5	1
试验载荷 Test load (t)	0.6	1.2
标准运行高度 Standard operating height (m)	3	3
运行速度 Running speed (m/min)	16.4	16.4
电源电压 Supply voltage (V Hz)	AC220V 50Hz	AC220V 50Hz
电机功率 Motor power (W)	60	200
电机转速 Motor speed (r/min)	1400	1400
能通过的最小弯道半径 Minimum bend radius that can pass (m)	1	1
工字钢号 I-steel	10-22	10-22
工字钢轨宽 I-beam Rail width (mm)	68-110	68-110
净重 N.W (kg)	8	19

型号 Model	0.5	1
额定载荷 Rated load (t)	0.5	1
试验载荷 Test load (t)	0.6	1.2
标准运行高度 Standard operating height (m)	3	3
运行速度 Running speed (m/min)	13	13
电源电压 Supply voltage (V Hz)	AC220V 50Hz	AC220V 50Hz
电机功率 Motor power (W)	60	200
电机转速 Motor speed (r/min)	1400	1400
能通过的最小弯道半径 Minimum bend radius that can pass (m)	1	1.5
工字钢号 I-steel	10-18	14-22
工字钢轨宽 I-beam Rail width (mm)	68-94	80-110
净重 N.W (kg)	14	17

单轨提升机行车 Monorail hoist train

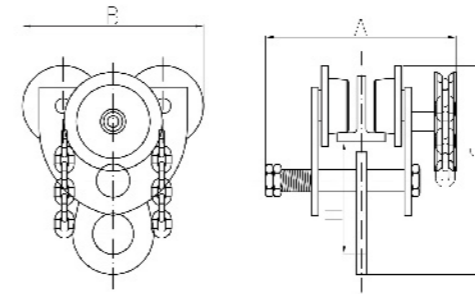
装置在单轨或悬臂式起重机上，
用于安装机器吊运货物、
设备维修等。

The device is on monorail or cantilever crane,
which is used to install machine to lift goods,
equipment maintenance and so on.



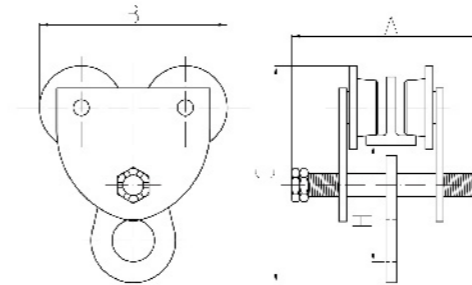
额定载重量 Rated Load capacity (t)	额定功率 Power rating (Kw)	转速 Speed (r/min)	适用工字钢 Suitable for I-steel	轨宽范围 Track width range (mm)	行走速度 Speed of travel (m/min)	额定电压 Rated voltage (V)	净重 N.W (kg)
1	0.2	1380	10-18	68-94	20	380/220	17

单轨桃型手拉跑车 Monorail Peach Hand Racing



额定载重量 Rated Load capacity (t)	试验载荷 Test load (t)	能通过的最小弯道半径 Minimum bend radius that can pass (m)	A (mm)	B (mm)	C (mm)	H (mm)	F (mm)	推荐用工字钢 Recommended I-steel (mm)
0.5	0.625	1	271	172	190	108	3	68-94
1	1.25	1	277	206	222	122	3	68-100
2	2.5	1.1	311	240	267	132	3	94-124
3	3.75	1.3	358	279	319	181	3	116-140
5	6.25	1.4	401	318	384	219	3	142-180
10	12.5	1.7	442	380	490	275	3	142-180

单轨桃型手推跑车 Monorail Peach Hand Racing



额定载重量 Rated Load capacity (t)	试验载荷 Test load (t)	能通过的最小弯道半径 Minimum bend radius that can pass (m)	A (mm)	B (mm)	C (mm)	H (mm)	F (mm)	推荐用工字钢 Recommended I-steel (mm)
0.5	0.625	1	208	172	190	108	3	68-94
1	1.25	1	220	206	222	122	3	68-100
2	2.5	1.1	260	240	267	132	3	94-124
3	3.75	1.3	285	279	319	181	3	116-140
5	6.25	1.4	338	318	384	219	3	142-180
10	12.5	1.7	362	380	490	275	3	142-180

可靠性

可用性
优势

单轨桃型手拉行车 Monorail hoist train

产品介绍:

- (1) 手推/手链单轨小车应与手拉葫芦、手扳葫芦或其它起重工具配套使用;
- (2) 安装于工字钢轨道的下翼缘上, 组成起重运输小车;
- (3) 手推/手链单轨小车内装有滚动轴承;
- (4) 具有传动效率高, 手推/拉力小。

注意事项:

- (1) 小车严禁超过额定载重量使用;
- (2) 小车在吊运重物时, 严禁任何人员在重物下行走或工作;
- (3) 小车在工作时, 如遇手推力/手拉力异常或发生其它故障, 应立即停止使用, 查明原因, 并排除故障。
- (4) 轴承应定期加注润滑脂, 同时认真检查紧固件有无松动。

Product description:

- (1) Hand-push/hand-chain monorail trolley shall be used in conjunction with hand-pulled hoist, hand-pulled hoist or other lifting tools;
- (2) Installed on the lower flange of the I-beam track to form a lifting trolley;
- (3) The hand-push/hand-chain monorail car is equipped with rolling bearings;
- (4) High transmission efficiency with small push/pull force.

Note:

- (1) It is strictly forbidden to use the trolley in excess of the rated deadweight;
- (2) It is strictly prohibited for any person to walk or work under heavy objects while lifting heavy objects;
- (3) When the trolley is in operation, if the hand thrust/hand pull force is abnormal or other malfunction occurs, it should be stopped immediately to find out the cause and troubleshoot.
- (4) The bearing should be greased regularly, and the fastener should be carefully checked for loosening.

更安全

更好的服务

单轨重型手拉行车 Monorail heavy hand pull

产品介绍:

- (1) 手推/手链单轨小车应与手拉葫芦、手扳葫芦或其它起重工具配套使用;
- (2) 安装于工字钢轨道的下翼缘上, 组成起重运输小车;
- (3) 手推/手链单轨小车内装有滚动轴承;
- (4) 具有传动效率高, 手推/拉力小。

注意事项:

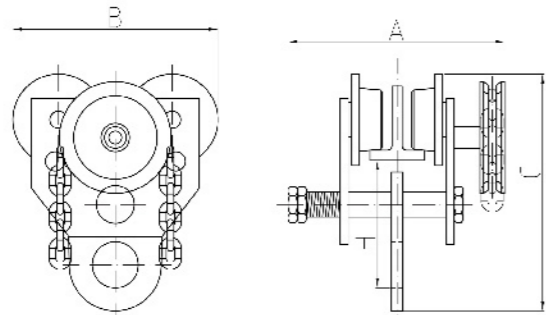
- (1) 小车严禁超过额定载重量使用;
- (2) 小车在吊运重物时, 严禁任何人员在重物下行走或工作;
- (3) 小车在工作时, 如遇手推力/手拉力异常或发生其它故障, 应立即停止使用, 查明原因, 并排除故障。
- (4) 轴承应定期加注润滑脂, 同时认真检查紧固件有无松动。

Product description:

- (1) Hand-push/hand-chain monorail trolley shall be used in conjunction with hand-pulled hoist, hand-pulled hoist or other lifting tools;
- (2) Installed on the lower flange of the I-beam track to form a lifting trolley;
- (3) The hand-push/hand-chain monorail car is equipped with rolling bearings;
- (4) High transmission efficiency with small push/pull force.

Note:

- (1) It is strictly forbidden to use the trolley in excess of the rated deadweight;
- (2) It is strictly prohibited for any person to walk or work under heavy objects while lifting heavy objects;
- (3) When the trolley is in operation, if the hand thrust/hand pull force is abnormal or other malfunction occurs, it should be stopped immediately to find out the cause and troubleshoot.
- (4) The bearing should be greased regularly, and the fastener should be carefully checked for loosening.



额定载重量 Rated Load capacity (t)	试验载荷 Test load (t)	能通过的最小弯道半径 Minimum bend radius that can pass (m)	A (mm)	B (mm)	C (mm)	H (mm)	F (mm)	推荐用工字钢 Recommended I-steel (mm)	净重 N.W (kg)
1	1.25	1	242	210	211	115	-3	40-125	9
2	2.25	1.1	280	240	236	130	-3	55-125	12
3	3.25	1.3	300	280	295	164	-3	55-155	18
5	5.25	1.4	316	320	334	177	-3	70-165	31



防撞单轨手拉行车
Anti-collision manual driving



重型单轨手拉行车
Heavy Monorail Traile

单轨重型手推行车 Monorail Heavy Hand Push

产品介绍:

- (1) 手推/手链单轨小车应与手拉葫芦、手扳葫芦或其它起重工具配套使用;
- (2) 安装于工字钢轨道的下翼缘上, 组成起重运输小车;
- (3) 手推/手链单轨小车内装有滚动轴承;
- (4) 具有传动效率高, 手推/拉力小。

注意事项:

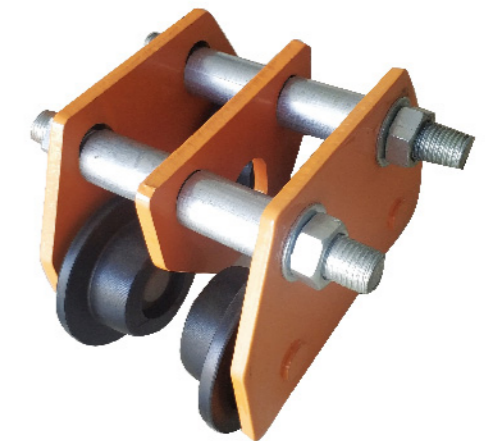
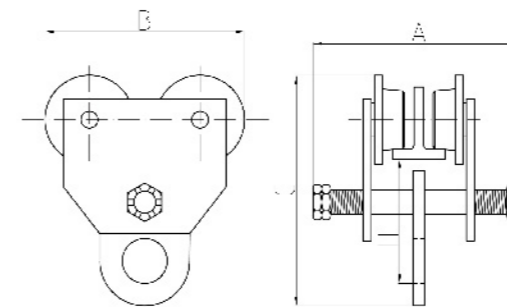
- (1) 小车严禁超过额定载重量使用;
- (2) 小车在吊运重物时, 严禁任何人员在重物下行走或工作;
- (3) 小车在工作时, 如遇手推力/手拉力异常或发生其它故障, 应立即停止使用, 查明原因, 并排除故障。
- (4) 轴承应定期加注润滑脂, 同时认真检查紧固件有无松动。

Product description:

- (1) Hand-push/hand-chain monorail trolley shall be used in conjunction with hand-pulled hoist, hand-pulled hoist or other lifting tools;
- (2) Installed on the lower flange of the I-beam track to form a lifting trolley;
- (3) The hand-push/hand-chain monorail car is equipped with rolling bearings;
- (4) High transmission efficiency with small push/pull force.

Note:

- (1) It is strictly forbidden to use the trolley in excess of the rated deadweight;
- (2) It is strictly prohibited for any person to walk or work under heavy objects while lifting heavy objects;
- (3) When the trolley is in operation, if the hand thrust/hand pull force is abnormal or other malfunction occurs, it should be stopped immediately to find out the cause and troubleshoot.
- (4) The bearing should be greased regularly, and the fastener should be carefully checked for loosening.



额定载重量 Rated Load capacity (t)	推荐用工字钢 Recommended I-steel (mm)	A (mm)	B (mm)	C (mm)	H (mm)	F (mm)	K (mm)	净重 N.W (kg)
0.5	68-94	177	10	187	114	3	24	4.8
1	68-100	194	206	206	119	3	24	7.7
2	94-124	235	240	243	140	3	30.5	12.8
3	100-140	275	282	321	212	3	45	24.5
5	124-180	338	327	392.5	245	3	60	43
10	142-180	362	389	489.5	320	5	82	88

可靠性
可用性
优势

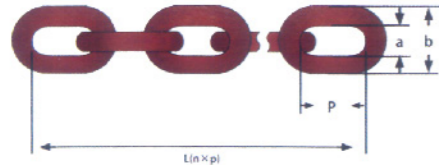
更安全
更好的服务

六、高强度链条系列

High Strength Chain Series

T级 (T、DAT和DT型) 高精度葫芦链 (T级数据)

T Level (T, DAT and DT Type) High Precision Cucurbit Chain (T Level Data)

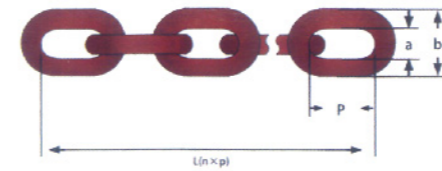


- ◆ 产品标准: GB/T 20947 (IDT) ISO 3077
 - ◆ 链条级别: G80 / G100
 - ◆ 原材料: 优质合金钢
 - ◆ 工艺控制: 严格执行标准要求/产品经过热处理
 - ◆ 尺寸公差: 详见相关标准或客户订单要求
 - ◆ 表面处理: 抛光、发黑、镀锌、喷塑等
 - ◆ 注: 可根据客户需求研发生产制造非标产品
- ◆ Product Standard: GB/T 20947(IDT) ISO 3077
 - ◆ Chain level: G80/G100
 - ◆ Raw materials: high quality alloy steel
 - ◆ Process control: Strict implementation of standard requirements / products after heat treatment
 - ◆ Dimensional tolerance: See relevant standards or customer order requirements for details
 - ◆ Surface treatment: polishing, blackening, galvanizing, spray molding, etc
 - ◆ Note: Non-standard products can be developed and manufactured according to customer needs

规格 Size d × p (mm)	极限工作负荷 WLL/T (max)	制造验证力 MPF/KN (min)	破断力 BF/KN (min)	节距 P (mm)	焊缝内宽 a (mm)/(min)	焊缝外宽 b (mm)/(max)	米重 Meters weight (kg/m)(≈)
3×9	0.28	7.1	11.3	9	3.6	10.2	
4×12	0.5	12.6	20.1	12	4.8	13.6	0.35
5×15	0.8	19.6	31.4	15	6	17	0.54
6×18	1.12	28.0	45	18	18	7.2	0.8
6.3×19	1.2	31.2	49.9	19	7.2	20.4	0.88
7.1×21	1.6	39.6	63.3	21	8.4	23.8	1.07
8×24	2	50.3	80.4	24	9.6	27.2	1.4
9×27	2.5	63.6	102	27	10.8	30.6	1.8
10×30	3.2	78.5	126	30	12	34	2.2
11.2×34	4	98.5	158	34	13.2	37.4	
12×36							3.1
12.5×38	5	123	196	38	14.4	40.8	
13×39	5.3	133	212	39	15.6	44.2	3.7
14×42	6	154	246	42	16.8	47.6	4.3
16×48	8	201	322	48	19.2	54.4	5.6
18×54	10	254	407	54	21.6	61.2	7
20×60	12.5	314	503	60	24	68	8.7
22×66	15	380	608	66	26.4	74.8	10.5

欧/美/日及国际标准G80起重链条 (中等精度)

European/American/Japan International Standard G80 Lifting Chain (Medium precision)



- ◆ 产品标准: EN 818—2 /ISO 3076 /DIN /BS /JIS /ASTM等
 - ◆ 链条级别: G80
 - ◆ 原材料: 优质合金钢
 - ◆ 工艺控制: 严格执行标准要求/产品经过热处理
 - ◆ 尺寸公差: 详见相关标准或客户订单要求
 - ◆ 表面处理: 抛光、发黑、镀锌、喷塑等
 - ◆ 注: 可根据客户需求研发生产制造非标产品
- ◆ Product Standard: EN 818-2/ISO 3076/DIN/BS/JIS/ASTM, etc.
 - ◆ Chain level: G80
 - ◆ Raw materials: high quality alloy steel
 - ◆ Process control: Strict implementation of standard requirements / products after heat treatment
 - ◆ Dimensional tolerance: See relevant standards or customer order requirements for details
 - ◆ Surface treatment: polishing, blackening, galvanizing, spray molding, etc
 - ◆ Note: Non-standard products can be developed and manufactured according to customer needs

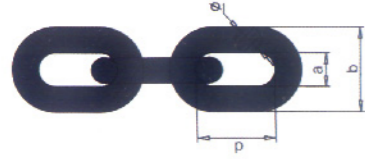
规格 Size d × p (mm)	极限工作负荷 WLL/T (max)	制造验证力 MPF/KN (min)	破断力 BF/KN (min)	节距 P (mm)	非焊缝内宽 a (mm)/(min)	非焊缝外宽 b (mm)/(max)	米重 Meters weight (kg/m)(≈)
6×18	1.12	28.3	45.2	18	7.8	22.2	0.8
7×21	1.5	38.5	61.6	21	9.1	25.9	1.1
8×24	2.0	50.3	80.4	24	10.4	29.6	1.4
9×27	2.5	63.6	102	27	11.7	33.3	1.8
10×30	3.15	78.5	126	30	13	37	2.2
11×33	3.8	95	152	33	14.3	40.7	2.7
12×36	4.6	113	181	36	15.6	44.4	3.1
13×39	5.3	133	212	39	16.9	48.1	3.8
14×42	6.3	154	246	42	18.2	51.8	4.4
16×48	8.0	201	322	48	20.8	59.2	5.7
18×54	10.0	254	407	54	23.4	66.6	7.3
20×60	12.5	314	503	60	26.0	74.0	9.0
22×66	15.0	380	608	66	28.6	81.4	10.9
23×69	16.0	415	665	69	29.9	85.1	12
25×75	20.0	491	785	75	32.5	92.5	14.1
26×78	21.2	531	849	78	33.8	96.2	15.2
28×84	25	616	985	84	36.4	104	17.6
32×96	31.5	804	1290	96	41.6	118	23.0

可靠性
可用性
优势

更安全
更好的服务

欧/美/日及国际标准G100起重链条

European/American/Japan International Standard G100 Lifting Chain



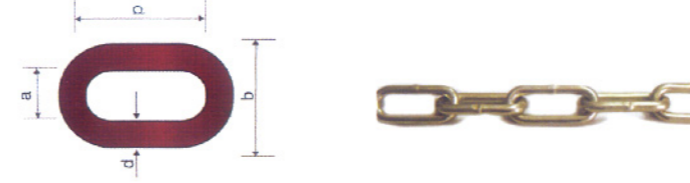
- ◆ 产品标准: EN 818-2 /ISO /DIN /BS /JIS /ASTM等
 - ◆ 链条级别: G100
 - ◆ 原材料: 优质合金钢
 - ◆ 工艺控制: 严格执行标准要求/产品经过热处理
 - ◆ 尺寸公差: 详见相关标准或客户订单要求
 - ◆ 表面处理: 抛光、发黑、镀锌、喷塑等
 - ◆ 注: 可根据客户需求研发生产制造非标产品
- ◆ Product Standard: EN 818-2/ISO/DIN/BS/JIS/ASTM, etc.
 - ◆ Chain level: G100
 - ◆ Raw materials: high quality alloy steel
 - ◆ Process control: Strict implementation of standard requirements / products after heat treatment
 - ◆ Dimensional tolerance: See relevant standards or customer order requirements for details
 - ◆ Surface treatment: polishing, blackening, galvanizing, spray molding, etc
 - ◆ Note: Non-standard products can be developed and manufactured according to customer needs

规格 Size d × p (mm)	极限工作负荷 WLL/T (max)	制造验证力 MPF/KN (min)	破断力 BF/KN (min)	节距 Pitch P (mm)	非焊缝内宽 a (mm)/(min)	非焊缝外宽 b (mm)/(max)	米重 Meters weight (kg/m)(≈)
6 × 18	1.4	35.3	56.5	18	7.8	22.2	0.9
7 × 21	1.9	48.1	77.0	21	9.1	25.9	1.2
8 × 24	2.5	62.8	101	24	10.4	29.6	1.6
10 × 30	4.0	98.2	157	30	13	37	2.5
13 × 39	6.7	166	212	39	16.9	48.1	4.2
16 × 48	10.0	251	402	48	20.8	59.2	6.2
18 × 54	12.5	318	509	54	23.4	66.6	8.1
20 × 60	16.0	393	628	60	26.0	74.0	10.0
22 × 66	19.0	475	760	66	28.6	81.4	11.9
26 × 78	26.5	664	1060	78	33.8	96.2	16.3



德国DIN763链条

Germany DIN 763 chain



规格 Size d (mm)	内长 Inside length p (mm)	外宽 Outer width b (mm)	工作负荷 Working load (kg)	试验负荷 Test load (n)	破断负荷 Break load (n)	每米重量 Weight per M Kg(≈)
2.0	22 ± 1.0	8 ± 0.4	25	800	1250	0.06
2.5	24 ± 1.1	10 ± 0.5	40	800	2000	0.10
3	26 ± 1.2	12 ± 0.6	55	1050	3200	0.15
3.5	28 ± 1.3	14 ± 0.7	80	1540	3850	0.20
4	32 ± 1.5	16 ± 0.8	100	2000	6000	0.27
4.5	34 ± 1.7	18 ± 0.9	128	2500	6300	0.35
5	35 ± 1.8	20 ± 1.0	160	3150	10000	0.43
5.5	38.5 ± 1.8	22 ± 1.1	195	3800	12000	0.52
6	42 ± 2.0	24 ± 1.2	224	4500	14000	0.63
7	49 ± 2.5	28 ± 1.4	300	6000	18000	0.86
8	52 ± 2.5	32 ± 1.6	400	8000	25000	1.10
8.5	56 ± 2.8	34 ± 1.7	460	9000	28000	1.25
9	59 ± 3.0	36 ± 1.8	530	10500	32000	1.41
10	65 ± 3.2	40 ± 2.0	630	12500	40000	1.75
11	72 ± 3.4	44 ± 2.0	790	15800	47500	2.11
12	78 ± 3.6	48 ± 2.3	940	18800	56500	2.55
13	82 ± 4.0	52 ± 2.5	1000	21200	63000	2.95
16	100 ± 5.0	64 ± 3.2	1600	33000	100000	4.45
18	113 ± 5.2	70 ± 3.2	2120	42300	127000	5.65
19	119 ± 5.6	72 ± 3.4	2370	47300	142000	6.25
20	120 ± 6.0	75 ± 3.8	2500	50000	160000	7.00
22	127 ± 6.0	82 ± 4.0	3170	63300	190000	8.55
25	140 ± 6.6	85 ± 4.2	4090	81700	245000	10.9
28	152 ± 7.0	96 ± 4.7	6000	12000	300000	13.9
32	171 ± 8.0	108 ± 5.2	8000	16000	400000	18.2

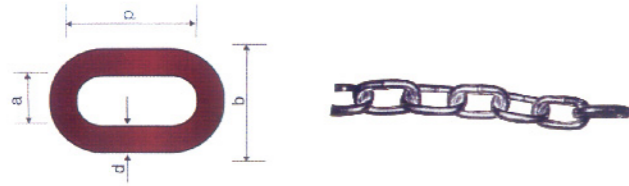
可靠性

可用性优势

更安全

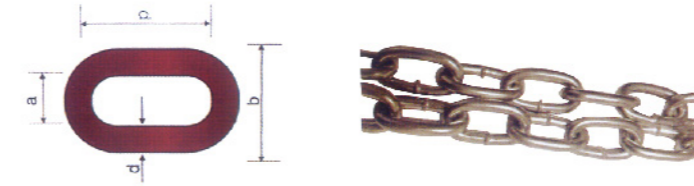
更好的服务

德国DIN764链条
Germany DIN 764 Chain



规格 Size d (mm)	±(mm)	内长 Inside length p (mm)	±(mm)	内宽 Inside width a (mm)	外宽 Outer width b (mm)	11环长度 11-ring length (mm)	±(mm)	100米重量 Weight per 100M (Kg)	破断负荷 Break load (kn)	试验负荷 Test load (kg)
4	0.20	16	0.30 0.20	5	14	176	1.60 0.90	31.3	7	400
5	0.20	18	0.40 0.20	7	18.2	198	1.80 1.00	51.4	11.8	680
6	0.20	21	0.50 0.20	8	21.5	231	2.00 1.10	74.0	16.5	850
8	0.20	28	0.50 0.30	11	29	308	2.20 1.20	131.5	32	1680
10	0.30	35	0.60 0.30	14	36	385	2.70 1.50	200	50	2630
12	0.30	42	0.60 0.30	16	41	462	3.20 1.80	298	70	3680
13	0.40	45	0.70 0.40	18	47	495	3.50 2.00	350	80	4200
14	0.45	49	0.75 0.45	20	48	539	3.80 2.00	406	92	4830
16	0.50	56	0.90 0.50	22	58	616	3.80 2.00	520	125	6700
18	0.80	63	1.00 0.50	24	65	693	4.30 2.50	650	160	8400
20	1.00	70	0.60 1.10	27	72	770	5.40 3.20	820	200	10000
23	1.20	80	1.30 0.70	31	83	880	6.20 3.50	1100	250	13000
26	1.30	91	0.50 0.80	35	94	1001	7.00 4.00	1400	320	16000

德国DIN766链条
Germany DIN 766 Chain



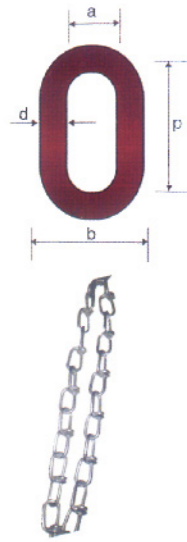
规格 Size d (mm)	±(mm)	内长 Inside length p (mm)	±(mm)	±(mm)	内宽 Inside width a (mm)	外宽 Outer width b (mm)	11环长度 11-ring length (mm)	±(mm)	±(mm)	每米重量 Weight per M (Kg)
2	0.2	12	0.2	0.2	3.5	7.5	132	1.1	0.5	0.07
3	0.2	16	0.2	0.2	4.2	11.0	176	1.4	0.7	0.16
4	0.2	16	0.3	0.2	5.0	13.7	176	2.1	1.1	0.32
5	0.2	18.5	0.4	0.2	6.0	17.0	203.5	2.4	1.2	0.5
6	0.2	18.5	0.4	0.2	7.2	20.2	203.5	2.4	1.2	0.8
7	0.3	22	0.4	0.2	8.4	23.8	242	3.0	1.4	1.1
8	0.3	24	0.4	0.2	9.6	27.2	264	3.2	1.5	1.4
9	0.4	27	0.5	0.3	10.8	30.6	297	3.6	1.8	1.8
10	0.4	28	0.5	0.3	12.0	34.0	308	3.7	1.9	2.2
11	0.4	31	0.5	0.3	13.2	37.4	341	4.0	2.0	2.7
12	0.3	36	0.6	0.3	14.4	40.8	396	4.4	2.2	3.10
13	0.5	36	0.6	0.4	15.6	44.2	396	4.6	2.4	3.8
14	0.6	41	0.7	0.4	16.8	47.6	451	5.4	2.7	4.4
16	0.6	45	0.8	0.4	19.2	54.4	495	6.0	3.0	5.7
18	0.9	50	0.8	0.4	21.6	61.2	550	6.6	3.3	7.3
19	0.4	53	0.9	0.4	22.8	64.6	583	7.0	3.7	7.97
20	1.0	56	1.0	0.5	24.0	68.0	616	7.4	3.7	9.0
22	1.2	62	1.1	0.5	26.4	75.0	682	8.0	4.0	11.0
23	1.2	64	1.1	0.5	27.6	78.2	704	8.4	4.2	12.0
26	1.3	73	1.2	0.6	31.2	88.4	803	9.6	4.8	15.0
28	1.4	78	1.3	0.65	33.8	95.2	858	10.2	5.1	18.0
30	1.5	84	1.4	0.7	41.0	102.0	924	11.0	5.5	23.0
32	1.6	90	1.5	0.75	43.0	108.8	990	11.8	5.9	0.75



可靠性
可用性
优势

更安全
更好的服务

DIN5686编结链条 DIN5686 Splice Chain



规格d Size (mm)	内长p Inside length (mm)	外宽b Outer width (mm)	破断负荷 Break load (kgs)	100米重量 Weight per 100M (kgs)
1.4	20.0	6.5	16	4.2
4.6	23.0	7.0	22	6.0
1.8	26.5	8.0	30	7.3
2.0	28.0	9.0	40	9.0
2.2	31.0	10.0	50	11.0
2.5	35.0	11.0	70	14.0
2.8	39.0	12.5	90	17.0
3.1	41.0	14.0	120	21.0
3.4	44.0	15.5	140	26.0
3.8	46.0	17.0	160	34.0
4.2	53.0	19.0	170	41.0
4.6	58.0	20.0	180	50.0
5.0	60.0	22.5	190	57.0

不锈钢链 Stainless Steel Link Chain



直径 Dia (mm)	内长 Inside length (mm)	外宽 Inside width (mm)	重量/米 Weight/M (kg)	直径 Dia (mm)	内长 Inside length (mm)	外宽 Inside width (mm)	重量/米 Weight/M (kg)
2	12	3.5	0.07	2	12	4	0.071
3	24	5	0.15	2.5	14	5	0.114
3	19	5	0.16	3	10	6	0.165
4	26	6	0.27	3	18	7	0.23
4	20	6	0.29	4	19	8	0.30
5	27	7	0.44	5	21	10	0.50
5	20	7	0.49	6	24	12	0.73
5.5	30	8	0.54	6	24	9	0.72
5.5	24	10	0.60	7	37	10	0.88
6	31	9	0.65	7	28	14	1.00
6	24	9	0.72	8	32	16	1.30
7	37	10	0.88	8	38	11	1.18
7	28	10	0.96	8	32	12	1.27
8	38	11	1.18	9	39	13	1.55
8	32	12	1.27	9	36	14	1.61
9	39	13	1.55	10	40	20	2.05
9	36	14	1.61	12	48	24	2.90
10	42	15	1.95	12	54	20	2.77
12	54	20	2.77	12	48	19	2.88

可靠性

更安全

链条表面处理图示 Chain surface treatment graphic



可用性
优势

更好的服务

链条配件 Chain fittings



链条配三角环和抓钩 Chain with triangular ring and grab hook



规格 Size	A	B1	C	B2	D	长度 Length	重量 Weight (kg)	BF	PCS/BAG
LY-001	2"	3/8"	5/16" × 11L	3/8"	5/16"	18"	1.17	10000LB	50
LY-002	2"	3/8"	5/16" × 11L	3/8"	3/8"	18"	1.17	10000LB	50
LY-003	3"	7/16"	5/16" × 10L	7/16"	5/16"	18"	1.32	16200LB	35
LY-004	3"	7/16"	3/8" × 9L	7/16"	3/8"	18"	1.48	16200LB	35
LY-005	3"	7/16"	3/8" × 5L	7/16"	3/8"	12"	1.28	16200LB	35
LY-006	4"	7/16"	3/8" × 9L	7/16"	3/8"	18"	1.68	20000LB	35
LY-007	*	3/8"	5/16" × 10L	3/8"	5/16"	18"	1.30	11000LB	35
LY-008	*	7/16"	3/8" × 9L	7/16"	3/8"	18"	1.35	16200LB	35

起重链条（合金钢）通用报废要求（参考）

起重链条在使用中出现下列情况之一的应考虑更换：

- 一、链条及配件出现变形或损伤的。
- 二、链条局部出现伸长、局部出现磨损的。
- 三、链条出现裂纹、切口、受热变色、严重变色、严重腐蚀、链环弯曲或变形及其它缺陷的。

General scrap requirements for lifting chain (alloy steel)(reference)

The replacement of the lifting chain shall be considered in any of the following cases in use:

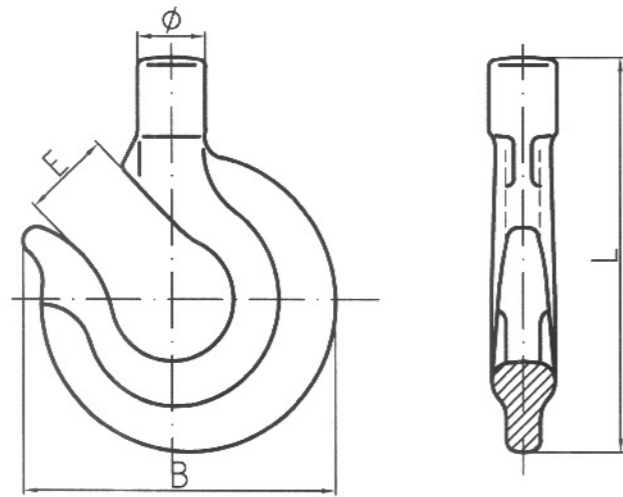
- 1、Deformed or damaged chains and fittings.
- 2、Partial elongation of the chain and partial wear.
- 3、Cracks, cuts, heat discoloration, severe discoloration, severe corrosion, chain bending or deformation, and other defects in the chain.

六、高强度索具配件系列

High Strength Rigging Accessory Series

高强度葫芦钩

High strength cucurbit

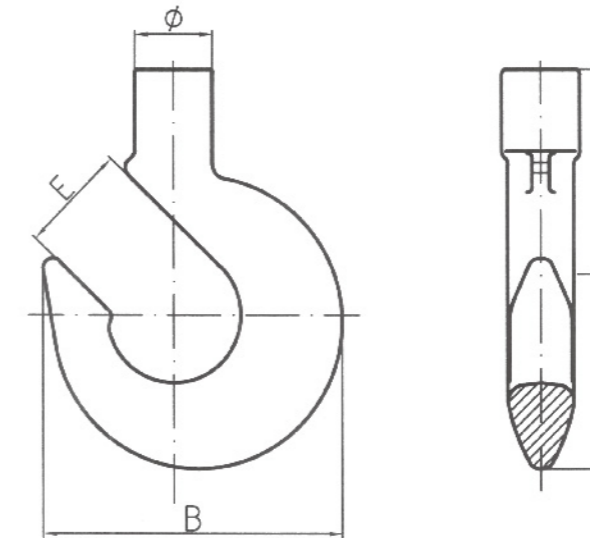


- ◆ 产品标准: EN1677、ISO、GB/T25854、GB/T25853等
 - ◆ 级别: G80 / G100
 - ◆ 原材料: 优质合金钢(20CrNiMo/42CrMo/35CrMo等)/经济型原材料
 - ◆ 工艺控制: 严格执行标准要求/产品经过热处理/2.5WLL(MPF)测试/4WLL(BF)测试
 - ◆ 尺寸公差: 详见相关标准或客户订单要求
 - ◆ 表面处理: 抛光、发黑、镀锌、喷塑等
 - ◆ 注: 可根据客户需求研发生产制造非标产品
- ◆ Product Standards: EN 1677, ISO, GB/T25854, GB/T25853, etc
 - ◆ Level: G80/G100
 - ◆ Raw Materials: High Quality Alloy Steel (20CrNiMo/42CrMo/35CrMo, etc.) / Economical Raw Materials
 - ◆ Process control: Strict implementation of standard requirements / product after heat treatment / 2.5 WLL (MPF) test / 4 WLL (BF) test
 - ◆ Dimensional tolerances: See relevant standards or customer order requirements for details
 - ◆ Surface treatment: polishing, blackening, galvanizing, spray molding, etc
 - ◆ Note: Non-standard products can be developed and manufactured according to customer needs

规格 Size(T)	重量 Weight(kg)	工作极限载荷 WLL(T)	MPF (T)	破断载荷 BF(T)	φ	B	E	L
1	0.31	1	2.5	4	18	81	24	24
2	0.675	2	5	8	23.6	104	30.5	30.5
3	1.142	3.2	8	12.8	27	123	34.5	34.5
5	2.112	5	12.5	20	32	157	45.5	45.5
7.5	3.774	7.5	18.75	30	39.5	190	48	48

高强度泥鳅钩

High-strength Loach Hook



- ◆ 产品标准: EN1677、ISO、GB/T25854、GB/T25853等
 - ◆ 级别: G80 / G100
 - ◆ 原材料: 优质合金钢(20CrNiMo/42CrMo/35CrMo等)/经济型原材料
 - ◆ 工艺控制: 严格执行标准要求/产品经过热处理/2.5WLL(MPF)测试/4WLL(BF)测试
 - ◆ 尺寸公差: 详见相关标准或客户订单要求
 - ◆ 表面处理: 抛光、发黑、镀锌、喷塑等
 - ◆ 注: 可根据客户需求研发生产制造非标产品
- ◆ Product Standards: EN 1677, ISO, GB/T25854, GB/T25853, etc
 - ◆ Level: G80/G100
 - ◆ Raw Materials: High Quality Alloy Steel (20CrNiMo/42CrMo/35CrMo, etc.) / Economical Raw Materials
 - ◆ Process control: Strict implementation of standard requirements / product after heat treatment / 2.5 WLL (MPF) test / 4 WLL (BF) test
 - ◆ Dimensional tolerances: See relevant standards or customer order requirements for details
 - ◆ Surface treatment: polishing, blackening, galvanizing, spray molding, etc
 - ◆ Note: Non-standard products can be developed and manufactured according to customer needs

规格 Size(T)	重量 Weight(kg)	工作极限载荷 WLL(T)	MPF (T)	破断载荷 BF(T)	φ	B	E	L
1	0.4	1	2.5	4	23	85	27	110
2	0.7	2	5	8	27	100	32	131
3	1.3	3.2	8	12.8	32	123	45	162
5	2.8	5	12.5	20	38	150	47.5	202

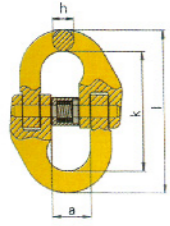
可靠性

可用性
优势

更安全

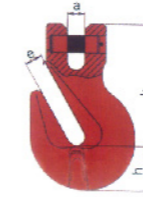
更好的服务

G80 欧式链接双环扣 G80 European Connecting Link



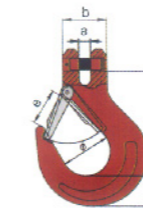
Item No.	Weight/kg	WLL/T	BF/T	a	l	k	h
BJLY06-8	0.08	1.12	4.48	15	58	42	7
BJLY07-8	0.145	1.5	6	19	71.8	54.8	8.5
BJLY7/8-8	0.146	2	8	18	79.5	62.5	8.5
BJLY08-8	0.16	2	8	18	79.5	60.5	8.5
BJLY10-8	0.30	3.5	12.6	25	93	68	10.8
BJLY13-8	0.70	5.3	21.2	29	117	87	15
BJLY16-8	1.1	8	32	34.5	148	108.4	19.8
BJLY18-8	1.84	10	40	38	154	112	21
BJLY18/20-8	1.8	12.5	50	41	169.5	121.5	24
BJLY22-8	3.2	15	60	48	193.5	141.5	26
BJLY26-8	4.5	21.2	84.8	57.5	220	158	30
BJLY32-8	9	31.5	126	67	281	205	37

G80 羊角带翅抓钩 G80 Clevis Grab Hook With Latch



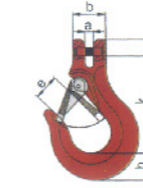
Item No.	Weight/kg	WLL/T	BF/T	e	a	h	k
BJLY06-8	0.25	1.12	4.48	8	8	16	75
BJLY7/8-8	0.32	2	8	10.8	9.5	21.6	90
BJLY10-8	0.73	3.15	12.6	13.5	12.5	30	126
BJLY13-8	1.6	5.3	21.2	16.5	15	42.5	163.5
BJLY16-8	2.8	8	32	19.2	19.5	45.5	183.5
BJLY20-8	5	12.5	50	24	24	56	219
BJLY22-8	6.3	15	60	27	27	68.5	254

G80 羊角滑钩 G80 Clevis Slip Hook



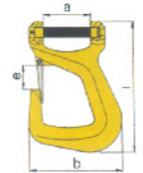
Item No.	Weight/kg	WLL/T	BF/T	a	b	φ	h	k	e
BJLY06-8	0.32	1.12	4.48	8	32	35	23	76	26
BJLY7/8-8	0.52	2	8	9.5	3	37	32.5	85.5	29
BJLY10-8	1.05	3.15	12.6	13	49	46	35	104	39
BJLY13-8	2	5.3	21.2	16.5	56.5	56	42.5	128	47
BJLY16-8	3.7	8	32	21.5	70.5	60	54	150	55
BJLY20-8	6	12.5	50	24	77	79	58	180	61
BJLY22-8	10.4	15	60	27	91	101	62	213	72

G80 铸舌羊角滑钩 G80 Clevis Slip Hook With Latch



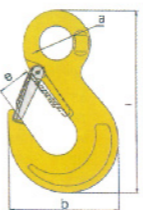
Item No.	Weight/kg	WLL/T	BF/T	a	b	h	k	l
BJLY6/7-8	0.58	1.6	6.4	8	24	28	100	144
BJLY07-8	0.72	1.6	6.4	8.5	28	32	105	153
BJLY08-8	0.91	2	8	10	30	32.5	117	168
BJLY10-8	1.42	3.2	12.8	12	32	41	128	191.5
BJLY13-8	3.30	6	24	15	40	49	177	254.5

G80 羊角吊带钩 G80 Clevis Sling Hook



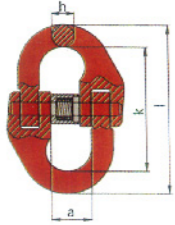
Item No.	Weight/kg	WLL/T	BF/T	a	b	e	l
BJLY2.2T-8	1.47	2.2	8.8	61	120	47	167

G80 法式锻舌钩 G80 French Forged Hook



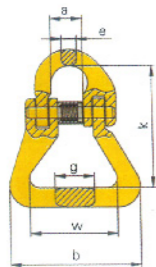
Item No.	Weight/kg	WLL/T	BF/T	a	b	e	l
BJLY7/8-8	0.58	2	8	25.5	26	38.3	138.5
BJLY10-8	0.96	3.15	12.6	35	37.5	42	163.7
BJLY13-8	1.84	5.3	21.2	40.5	41.5	52	210

G80 美式双环扣 G80 US Type Connecting Link



Item No.	Weight/lbs	WLL/T	BF/T	a	l	k	h
BJLY1/4-8	0.24	3250	13000	19.5	69	55	7
BJLY5/16-8	0.32	4500	1800	18	79.5	62.5	8.5
BJLY3/8-8	0.58	6600	26400	27	91.5	68.5	11.5
BJLY1/2-8	1.20	11250	45000	35	111	81	15
BJLY5/8-8	2.42	16500	66000	42	137.5	95.5	21
BJLY3/4-8	3.89	23000	92000	43	171	126	22.5
BJLY7/8-8	6.08	28750	115000	48	190.5	141.5	24.5

G80 吊带式双环扣 G80 Web Sling Connecting



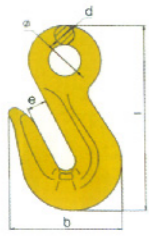
Item No.	Weight/lbs	WLL/T	BF/T	a	b	k	w	g	e
BJLY06-8	0.2	1.12	4.48	15	60	56	56	18	7
BJLY7/8-8	0.3	2.0	8.0	20	61.5	63.7	63.7	24	9.5
BJLY10-8	0.68	3.15	12.6	24	66	83	83	30.5	11
BJLY13-8	1.47	5.3	21.2	28	88	93.7	93.7	36.8	16.5
BJLY16-8	2.3	8	32	34.5	108	120	120	45.2	19.8
BJLY20-8	3.3	12.5	50	41	129	138	138	51.8	23

可靠性

可用性
优势

更安全
更好的服务

G80 眼型翅钩 G80 Eye Hook



Item No.	Weight/kg	WLL/T	BF/T	φ	e	d	b	l
BJLY06-8	0.25	1.12	4.48	13	8	8	45	76.5
BJLY7/8-8	0.4	2	8	16	11	9.5	63	106
BJLY10-8	0.6	3.15	12.6	20	13	12	79	126
BJLY13-8	1.2	5.3	21.2	25	16	15	100	156
BJLY16-8	2.7	8	32	28.5	20	19	122	193
BJLY18/20-8	4.3	12.5	50	36	25	20	150.5	226
BJLY22-8	6.4	15	60	42	26	27	169	269

G80 眼型安全钩 G80 Eye Self-locking Hook



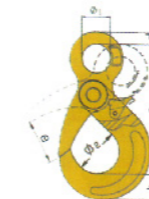
Item No.	Weight/kg	WLL/T	BF/T	a	h	e	l	φ
BJLY7/8-8	0.75	2	8	25	21.5	34	163	40
BJLY7/10-8	12	3.15	12.6	32	26.2	42	201.5	50
BJLY7/13-8	2	5.3	21.2	40	31	50	243.5	60
BJLY7/16-8	4.1	8	32	50	39.5	60	298	70

G80 羊角安全钩 G80 Clevis Self-locking Hook



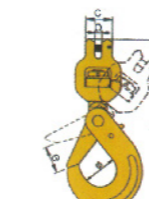
Item No.	Weight/kg	WLL/T	BF/T	a	h	e	l	φ
BJLY7/8-8	0.6	2	8	9.5	21.5	36	149	40
BJLY7/10-8	1.1	3.15	12.6	12	26.2	44	189	50
BJLY7/13-8	2	5.3	21.2	15	31	54	229	60
BJLY7/16-8	4.2	8	32	18	39.5	63	270	70

G80 欧式眼型安全钩 G80 European Type Self-locking Hook



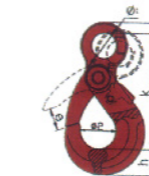
Item No.	Weight/kg	WLL/T	BF/T	φ1	r	d	φ2	h	e
BJLY06-8	0.5	1.12	4.48	22	110.5	10	34	19.5	28
BJLY7/8-8	0.8	2	8	25	136	12	46	24	34
BJLY10-8	1.55	3.15	12.6	32	171	15	56	28.5	44
BJLY13-8	3.2	5.3	21.2	40.5	208.5	19.5	69	40	52
BJLY16-8	5.74	8	32	56	257.5	22	86	50.5	60
BJLY20-8	8.5	12.5	50	64.5	275	27	100	55	81
BJLY22-8	13	15	60	70	320	30	98	67	82
BJLY26-8	18	21.2	84.8	80	363	34	110	75	110
BJLY32-8	44.5	31.5	126	105	472	45	166	97	168

G80 羊角旋转安全钩 G80 Clevis Self-locking Hook



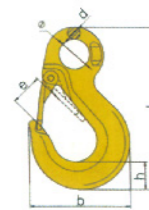
Item No.	Weight/kg	WLL/T	BF/T	φ	b	c	l	e
BJLY06-8	0.73	1.12	4.48	34	8	32	180	28
BJLY7/8-8	1.3	2	8	46	9.5	37	227.5	34

G80 美式眼型安全钩 G80 US Type Eye Self-locking Hook



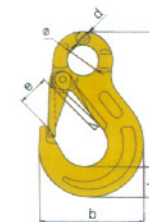
Item No.	Weight/kg	WLL/lbs	BF/lbs	φ1	e	φ2	h	k	l
BJLY7/8-8	2.16	4500	18000	25	35	42	29.5	132	173.5
BJLY10-8	4.08	7100	28400	32.5	46	55	34.5	171	220.5
BJLY13-8	8.28	12000	48000	42	56	64	41.5	213	273.5

G80 眼型滑钩 G80 Eye Slip Hook



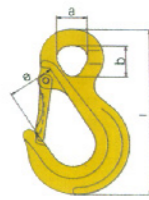
Item No.	Weight/kg	WLL/T	BF/T	φ	d	e	h	b	l
BJLY7/8-8	0.53	2	8	25.5	11.5	26	23.5	83	138.5
BJLY10-8	0.9	3.15	12.6	32.5	13.5	34	30	107	176.5
BJLY13-8	1.9	5.3	21.2	39.5	18	40.5	37.5	134.5	218
BJLY16-8	3.3	8	32	50	23	44	42.5	157.5	260
BJLY20-8	5.48	12.5	50	60	27	52	53	189	310
BJLY22-8	9.12	15	60	68	31.5	60	74	239	374.5

G80 欧式眼型滑钩 G80 European Eye Slip Hook



Item No.	Weight/kg	WLL/T	BF/T	φ	d	e	h	b	l
BJLY06-8	0.3	1.12	4.48	20.5	9	18.5	20	68	109
BJLY7/8-8	0.55	2	8	25	11	22	27	84	133.5
BJLY10-8	1.05	3.15	12.6	34	14	28	33	102.5	167.5
BJLY13-8	1.75	5.3	21.2	42.5	17.5	35	40	128.5	207.5
BJLY16-8	3.2	8	32	52	22	43	48	156.5	253
BJLY18/20-8	5.3	12.5	50	62	26	51.5	56	187	300

G80 眼型滑钩 G80 Eye Slip Hook

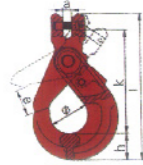


Item No.	Weight/kg	WLL/T	BF/T	a	b	e	l
BJLY06-8	0.53	1.12	4.48	20	81	24.5	121.5
BJLY7/8-8	0.65	2	8	25	88.5	24	147.5
BJLY10-8	1.15	3.15	12.6	38	108.5	32	184
BJLY13-8	1.77	5.3	21.2	43	127.5	36	225
BJLY16-8	3.3	8	32	43	162	48	265

可靠性
可用性
优势

更安全
更好的服务

G80 美式羊角安全钩 G80 US Type Clevis Sglf-locking Hook



Item No.	Weight/kg	WLL/lbs	BF/lbs	a	e	φ	h	k	l
BJLY08-8	2.12	4500	18000	9.5	35	42	29.5	116.5	163.5
BJLY7/10-8	3.53	7100	28400	12	46	55	34.5	145	203
BJLY7/13-8	8.05	12000	48000	15	56	64	41.5	173	247

G80 DI N7541 眼型货钩 G80 Eye Hook



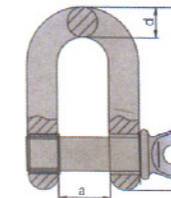
Item No.	Weight/kg	WLL/T	BF/T	φ	e	d	h	l
BJLY17-8	0.16	0.5	2	18	18	9	18	98
BJLY20-8	0.5	1	4	25	26	12.5	26	137
BJLY21-8	0.8	1.25	5	28	29	14	28.5	156
BJLY22-8	1.1	1.6	6.4	31.5	33	16.5	32	174
BJLY23-8	1.6	2	8	35	35	18	37	193
BJLY24-8	2.1	2.5	10	41	40	20	40	219
BJLY25-8	3.3	3	12	45.5	44	23	47.5	250

G80 美式旋转安全钩 G80 US Type Swivel Self-locking Hook



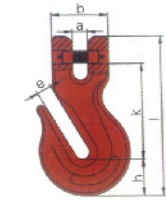
Item No.	Weight/kg	WLL/lbs	BF/lbs	a	d	φ	h	k	e
BJLY08-8	4.2	4500	18000	35.5	12.5	42	29.5	177	32
BJLY7/10-8	6.8	7100	28400	42	15	55	34.5	211.5	46
BJLY7/13-8	9.9	12000	48000	50	18	64	41.5	253.5	56

D 型卸扣 Dee Shackle



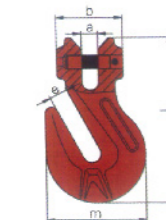
Item No.	Weight/lbs	WLL/T	BF/T	a	d	l
BJLY1/4	0.11	0.5	2	12	6.35	40.4
BJLY5/16	0.17	0.75	3	13.5	8	48.5
BJLY3/8	0.28	1	4	16.8	9.7	58.5
BJLY7/16	0.43	1.5	6	19	11.2	67.6
BJLY1/2	0.59	2	8	20.6	12.7	77
BJLY5/8	1.25	3.25	13	27	15.5	95.5
BJLY3/4	2.63	4.75	19	32	20.6	116.6
BJLY7/8	3.16	6.5	26	36.6	24.6	135.5
BJLY1	4.75	2	34	20.6	25.4	150.8
BJLY1-1/8	6.75	9.5	38	46	31.75	172.2
BJLY1-1/4	9.06	12	48	51.6	35	190.5
BJLY1-3/8	11.63	13.5	54	57.2	38.1	210.3
BJLY1-1/2	15.95	17	68	60.5	41.1	230.1
BJLY1-3/4	26.75	25	100	73.2	53.8	278.6
BJLY2	42.31	35	140	82.6	50.8	312
BJLY2-1/2	71.75	55	220	105	66.5	377

G80 羊角抓钩 G80 Clevis Grab Hook



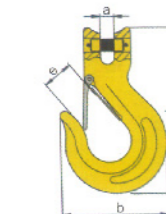
Item No.	Weight/kg	WLL/lbs	BF/lbs	a	e	b	h	k	l
BJLY1/4-8	0.66	3500	14000	10	9.5	38	23	65.3	106.5
BJLY3/8-8	1.43	7100	28400	12.7	13	46	31	82	137
BJLY1/2-8	3.75	12000	48000	16.5	16.5	61	43	113	184.5
BJLY5/8-8	5.52	18100	72400	20	20	68.5	49	129.5	215
BJLY3/4-8	9.35	28300	113200	24	24	88	58	152	254
BJLY7/8-8	13.67	34200	136800	27.5	26.5	101	66	178	295

G80 意式羊角翅钩 G80 Italian Clevis Shortening Grab Hook



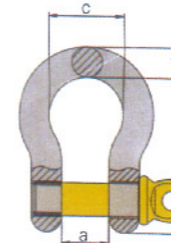
Item No.	Weight/kg	WLL/T	BF/T	a	b	e	m	l
BJLY06-8	0.25	1.12	4.48	8	32	8	44	75
BJLY07-8	0.32	2	8	10	39	11	56	93
BJLY10-8	0.71	3.15	12.6	13	46	14	74	127
BJLY13-8	1.38	5.3	21.2	17	56	18	84	154
BJLY16-8	2.62	8	32	21.5	73.5	21	113	184
BJLY20-8	4.13	12.5	50	24	77	24	127	212
BJLY22-8	6.3	15	60	27	91	27	148	247

G80 羊角滑钩 G80 Clevis Slip Hook



Item No.	Weight/kg	WLL/lbs	BF/lbs	a	b	e	l
BJLY1/4-8	1.1	3500	14000	11.5	89	29	137.5
BJLY3/8-8	2.65	7100	28400	14.5	117	38	179
BJLY1/2-8	4.96	12000	48000	17.8	139	47	217.5
BJLY5/8-8	8.15	18100	72400	20.8	161.5	52	253
BJLY3/4-8	12.12	28300	113200	24.5	187	56	294

弓形卸扣 Bow shackle

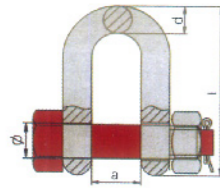


Item No.	Weight/lbs	WLL/T	BF/T	a	c	d	l
BJLY3/16	0.06	0.33	1.32	9.65	15.3	4.8	37.5
BJLY1/4	0.10	0.5	1.2	12	19.8	6.35	46.8
BJLY5/16	0.19	0.75	3	13.5	21.4	8	53
BJLY3/8	0.31	1	4	16.8	26.2	9.7	63.2
BJLY7/16	0.38	1.5	6	19.1	29.5	11.2	78
BJLY1/2	0.73	2	8	20.6	33.3	12.7	83.3
BJLY5/8	1.37	3.25	13	27	42.9	16	106.5
BJLY3/4	2.36	4.75	19	32	50.8	20.6	126.5
BJLY7/8	3.62	6.5	26	36.6	58	24.6	148
BJLY1	5.03	8.5	34	43	68.4	27	167
BJLY1-1/8	7.41	9.5	38	46	74	31.75	190
BJLY1-1/4	9.50	12	48	51.6	82.6	35	209.6
BJLY1-3/8	13.53	13.5	54	57.2	92.2	38.1	232.7
BJLY1-1/2	17.20	17	68	60.5	98.6	41.2	254
BJLY1-3/4	27.78	25	100	73.2	127	57.2	313.5
BJLY2	45.00	35	140	82.6	146	61	347.5
BJLY2-1/2	85.75	55	220	105	184.2	79.5	453.2

可靠性
可用性
优势

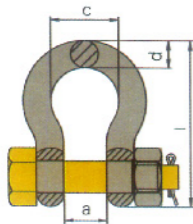
更安全
更好的服务

D 型卸扣 Dee Shackle



Item No.	Weight/lbs	WLL/T	BF/T	a	d	φ	l
BJLY1/4	0.13	0.5	2	11.9	6.4	6.4	40.4
BJLY5/16	0.23	0.75	3	13.5	8	8	48.5
BJLY3/8	0.33	1	4	16.8	9.7	9.7	58.7
BJLY7/16	0.49	1.5	6	19	11.2	11.2	67.8
BJLY1/2	0.75	2	8	20.6	12.7	12.7	77
BJLY5/8	1.47	3.25	13	27	16	16	95.5
BJLY3/4	2.52	4.75	19	32	20.6	20.6	115
BJLY7/8	3.85	6.5	26	36.6	24.6	24.6	135.4
BJLY1	5.55	8.5	34	43	25.4	25.4	151
BJLY1-1/8	7.6	9.5	38	46	31.75	31.75	172.2
BJLY1-1/4	10.81	12	48	51.6	35	35	190.5
BJLY1-3/8	13.75	13.5	54	57.2	38.1	38.1	210.3
BJLY1-1/2	18.5	17	68	60.5	41.1	41.2	230
BJLY1-3/4	31.4	25	100	73.2	53.8	53.8	278.7
BJLY2	46.75	35	140	82.6	59.9	59.9	323.6
BJLY2-1/2	85	55	220	105	66.8	66.8	377.2
BJLY3	124.25	85	340	127	90	90	428.5

弓形卸扣 Bow shackle

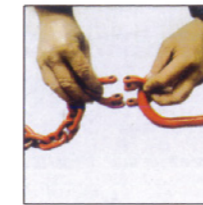
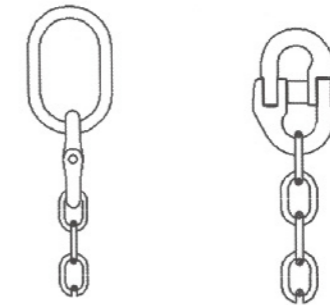
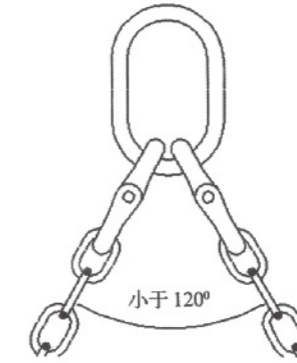


Item No.	Weight/lbs	WLL/T	BF/T	a	c	d	l
BJLY3/16	0.06	0.33	1.32	9.7	15.3	4.8	37.5
JLY1/4	0.11	0.5	2	11.9	19.8	6.35	46.8
BJLY5/16	0.22	0.75	3	13.5	21.4	8	53
BJLY3/8	0.33	1	4	16.8	26.2	9.7	63.3
BJLY7/16	0.49	1.5	6	19	29.5	11.2	78
BJLY1/2	1.01	2	8	20.6	33.3	12.7	83.3
BJLY5/8	1.60	3.25	13	27	42.9	17.5	106.5
BJLY3/4	2.42	4.75	19	32	50.8	20.6	126.5
BJLY7/8	3.95	6.5	26	36.6	58	24.6	148.1
BJLY1	5.66	8.5	34	43	68.4	27	166.6
BJLY1-1/8	8.27	9.5	38	46	74	31.75	190
BJLY1-1/4	11.71	12	48	51.6	82.6	35	209.6
BJLY1-3/8	15.83	13.5	54	57.2	92.2	38.1	232.7
BJLY1-1/2	20.8	17	68	60.5	98.6	41.2	254
BJLY1-3/4	33.91	25	100	73.2	127	57.2	313.5
BJLY2	52.25	35	140	82.6	146	61	347.5
BJLY2-1/2	98.25	55	220	105	184.2	79.5	453.2
BJLY3	154.00	85	340	127	200.2	92	546.1
BJLY3-1/2	265.00	120	480	133.4	228.6	104.6	625.6
BJLY4	338.00	150	600	139.7	254	115.8	652.5

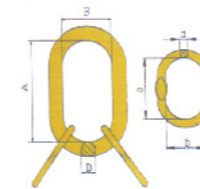
八、高强度组合索具系列

High-Strength Combined Rigging Series

正确的使用组合 Correct Use



子母环 (MTC型) MTC Master Link Assembly



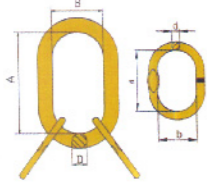
Item No.	Weight/kg	WLL/T	BF/T	A	B	D	a	b	d
BJLY06-8	1.45	2.3	11.5	150	90	19	67	38	13
BJLY08-8	2.24	4.25	21.25	160	95	22	70	46	16
BJLY10-8	4.88	6.7	33.5	200	120	30	90	60	19
BJLY13-8	8.66	11.2	56	240	140	34	140	65	25
BJLY16-8	14.86	17	85	250	150	40	180	100	32
BJLY18-8	14.86	17	85	250	150	40	180	100	32
BJLY19-8	26	26.8	134	300	200	50	190	110	38
BJLY20-8	26	26.8	134	350	200	50	190	110	38
BJLY22-8	32.2	31.5	157.5	350	200	55	190	110	40
BJLY26-8	39.95	45	225	350	200	60	200	110	45
BJLY28-8	39.95	45	225	350	200	60	200	110	45
BJLY32-8	39.95	67	225	400	200	70	200	120	50

可靠性
可用性
优势

更安全
更好的服务

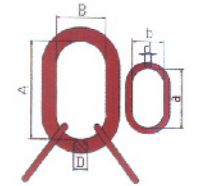
子母环 (MTC型) MTC Master Link Assembly

Item No.	Weight/kg	WLL/T	BF/T	A	B	D	a	b	d
BJLY06	1.9	3.5	14	150	90	19	120	70	14
BJLY08	3.0	5	20	160	95	22	140	80	17
BJLY10	6.46	11.5	46	200	120	30	160	95	22
BJLY13	14.86	17	68	250	150	40	200	120	30
BJLY16	23.23	28	112	300	200	50	200	120	32
BJLY20	32.75	35	140	300	200	55	250	150	38
BJLY22	45.6	53	212	350	200	60	260	150	45
BJLY26	70.2	70	280	450	250	70	280	160	50
BJLY32	91.28	90	360	450	260	80	280	160	55



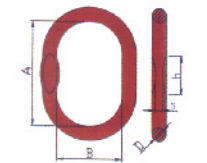
子母环 (8007) 8007 Master Link Assembly

Item No.	Weight/kg	WLL/T	BF/T	A	B	D	a	b	d
BJLY06	1.43	4.6	18.4	120	61	16	120	60	14
BJLY0708	3.65	8.6	34.4	162	90	22	140	70	20
BJLY10	5.53	14.5	58	200	110	28	140	70	22
BJLY13	11.92	23.1	92.4	270	140	36	185	90	28
BJLY16	16.4	29	116	280	155	40	200	110	32
BJLY1820	23.5	36.5	146	320	175	45	225	125	36
BJLY22	32.3	45.2	180.8	350	195	50	260	130	40
BJLY26	59.3	59.9	239.6	410	220	58	350	195	50
BJLY32	97.4	84.7	338.8	490	265	70	410	220	58



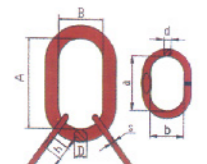
强力环 (WA-S) WA-S Master Link

Item No.	Weight/kg	WLL/T	BF/T	A	B	D	s	h
BJLY-S-87	0.38	2.7	10.8	120	70	13	7	25
BJLY-S-108	0.67	3.5	14	140	80	16	7	25
BJLY-S-1310	1.20	5.5	22	160	95	20	11	35
BJLY-S-1613	1.45	9.4	37.6	190	110	26	13	45
BJLY-S-2016	4.48	14.2	56.8	230	130	32	16	45
BJLY-S-2220	7.50	22.3	89.2	275	150	38	-	-
BJLY-S-2622	12.80	33.5	134	340	180	45	-	-
BJLY-S-3226	16.55	40.8	163.2	350	190	50	-	-
BJLY-S-3632	23.28	56.8	227.2	400	200	56	-	-



子母环 (WA-S) WA-S Master Link Assembly

Item No.	Weight/kg	WLL/T	BF/T	A	B	D	a	b	d	s	h
BJLY-S-07	1.9	5.5	22	160	95	20	110	60	13	7	25
BJLY-S-08	2.82	6.65	26.6	160	95	22	140	80	16	7	25
BJLY-S-10	4.87	9.4	37.6	190	110	26	160	95	20	11	35
BJLY-S-13	9.38	14.2	56.8	230	130	32	190	110	26	13	45
BJLY-S-16	15.28	22.3	89.2	275	150	38	230	130	30	16	45
BJLY-S-20	21.78	33.5	134	340	180	45	230	130	32	-	-
BJLY-S-22	31.52	40.8	163.2	350	190	50	275	150	38	-	-
BJLY-S-26	48.92	56.8	227.2	400	200	56	340	180	45	-	-



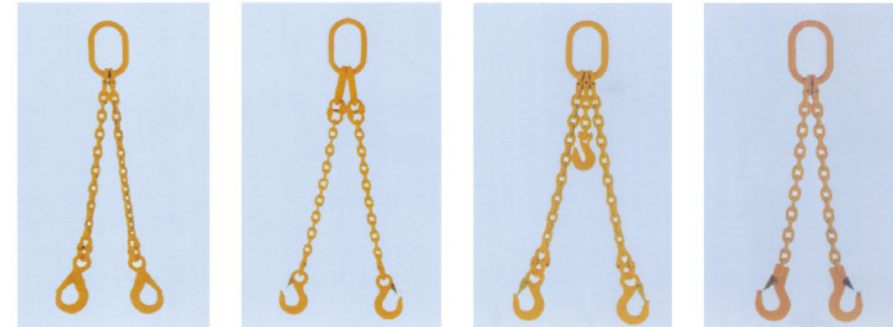
组合索具图示 Rigging Diagram

组合索具与链条的连接件，可以是双环扣、吊钩（眼型、羊角型）、吊环、卸扣等，便于客户随意组合。
Riggings are chain accessories, such as connecting link, clevis/eye hood, shackle etc, customers can use them as required.

单肢链条索具 Single-leg Chain Sling



双肢链条索具 Double-leg Chain Sling



三肢链条索具 Three-leg Chain Sling



四肢链条索具 Four-leg Chain Sling



[注：上述组合索具也可以由起重吊装带组合而成]
Note: The above-mentioned combined rigging can also be made from the lifting sling combination

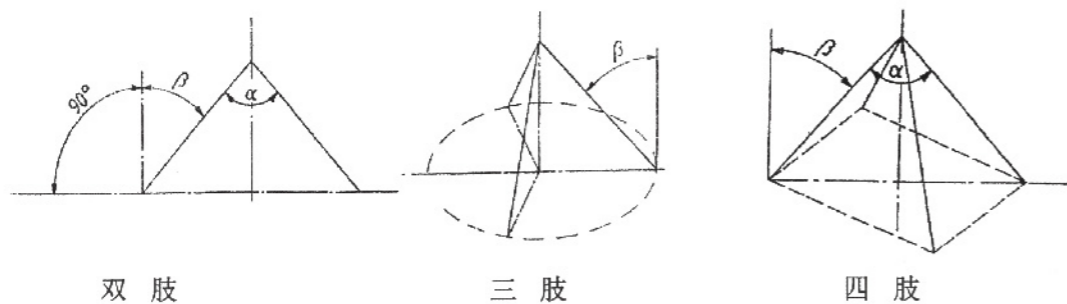
可靠性
可用性
优势

更安全
更好的服务

组合索具极限工作载荷技术要求
Techical Requirement And Working Load Limit

链条的名义尺寸 Nominal dimensions of chains (dn/mm)	极限工作载荷 Extreme Working Load WLL(T)				
	单肢吊链 Single limb chain	双肢吊链 Double limb chain		三肢和四肢吊链 Three-legged and limb chain	
		$0^\circ \leq \alpha \leq 90^\circ$	$90^\circ \leq \alpha \leq 120^\circ$	$0^\circ \leq \alpha \leq 90^\circ$	$90^\circ \leq \alpha \leq 120^\circ$
	$0^\circ \leq \beta \leq 45^\circ$	$45^\circ \leq \beta \leq 60^\circ$	$0^\circ \leq \beta \leq 45^\circ$	$45^\circ \leq \beta \leq 60^\circ$	
6	1.1	1.5	1.1	2.3	1.6
7	1.56	2.1	1.5	3.1	2.2
8	2	2.8	2	4.2	3
10	3.2	4.4	3.2	6.7	4.8
13	5.4	7.5	5.4	11.3	8.1
16	8	11.2	8	16.8	12
18	10	14	10	21	15
19	11.5	16.1	11.5	24.1	17.2
20	12.5	17.5	12.5	26.2	18.7
22	15.5	21.7	15.5	32.5	23.2
23	16.9	23.6	16.9	35.4	25.3
25	20	28	20	42	30
26	21.6	30.2	21.6	45.3	32.4
28	25	35	25	52.5	37.5
32	32	44.8	32	67.2	48
36	40	56	40	84	60
40	50	70	50	105	75
45	63	88.2	63	132.3	94.5

组合角度示意图
Schematic diagram of combining angles



双肢

三肢

四肢

可靠性
可用性
优势

九、高强度合成纤维起重吊装带系列
High Strength Synthetic Fiber Lifting Ribbon Series

合成纤维“圆形”吊装带 MTC Master Link Assembly

- ◆ 产品标准：JB/T8521.2-2007 / EN 1492-2。
 - ◆ 原材料（套/芯）：高强度低收缩聚酯纤维长丝。
 - ◆ 工艺控制：执行标准要求。
 - ◆ 尺寸（长度）：详见相关标准或客户需求。
 - ◆ 吊带颜色：按不同规格的颜色要求染色。
 - ◆ 破断力：标准6 WLL（6倍极限工作载荷）。
 - ◆ 轻便柔软，方便狭小空间使用；根据使用环境加保护套或保护装置（护角等）；使用环境温度 $-40^\circ\text{C} \sim 100^\circ\text{C}$ 。
- [注：可根据客户需求研发生产制造破断力：4WLL / 5WLL / 7WLL 圆形吊带类产品]



带护套圆形吊带 Sheathed circular sling



不带护套圆形吊带 No sheathed circular sling

更安全
更好的服务

规格 Code (T)	颜色 Color	极限工作载荷 Extreme Working Load WLL(T)								
		垂直提升 steep lifting	扼圈式提升 Choke lift	吊篮式提升 Hanging basket type lift		双肢吊索 Double limb slings		三肢四肢吊索 Three limb slings		
				平行	0~45°	45~60°	0~45°	45~60°	0~45°	45~60°
		M=1	M=0.8	M=2	M=1.4	M=1	M=1.4	M=1	M=2.1	M=1.5
1.0	紫色	1.0	0.8	2.0	1.4	1.0	1.4	1.0	2.1	1.5
2.0	绿色	2.0	1.6	4.0	2.8	2.0	2.8	2.0	4.2	3.0
3.0	黄色	3.0	2.4	6.0	4.2	3.0	4.2	3.0	6.3	4.5
4.0	灰色	4.0	3.2	8.0	5.6	4.0	5.6	4.0	8.4	6.0
5.0	红色	5.0	4.0	10.0	7.0	5.0	7.0	5.0	10.5	7.5
6.0	棕色	6.0	4.8	12.0	8.4	6.0	8.4	6.0	12.6	9.0
8.0	蓝色	8.0	6.4	16.0	11.2	8.0	11.2	8.0	16.8	12.0
10.0	橙色	10.0	8.0	20.0	14.0	10.0	14.0	10.0	21.0	15.0
12.0	橙色	12.0	9.6	24.0	16.8	12.0	16.8	12.0	25.2	18.0
15.0	橙色	15.0	12.0	30.0	21.0	15.0	21.0	15.0	31.5	22.5
20.0	橙色	20.0	16.0	40.0	28.0	20.0	28.0	20.0	42.0	30.0
25.0	橙色	25.0	20.0	50.0	35.0	25.0	35.0	25.0	52.5	37.5
30.0	橙色	30.0	24.0	60.0	42.0	30.0	42.0	30.0	63.0	45.0
40.0	橙色	40.0	32.0	80.0	56.0	40.0	56.0	40.0	84.0	60.0
50.0	橙色	50.0	40.0	100.0	70.0	50.0	70.0	50.0	105.0	75.0
60.0	橙色	60.0	48.0	120.0	84.0	60.0	84.0	60.0	126.0	90.0
80.0	橙色	80.0	64.0	160.0	112.0	80.0	112.0	80.0	168.0	120.0
100.0	橙色	100.0	80.0	200.0	140.0	100.0	140.0	100.0	210.0	150.0

[注：M=对称承载的系数，吊装带或吊装带零件的安装公差：垂直方向为6°。]
[Note: M = coefficient of symmetrical bearing, installation tolerance of hoisting belt or hoisting belt parts: vertical direction is 6°.]

合成纤维“扁平”吊装带 MTC Master Link Assembly

- ◆ 产品标准：JB/T8521.1-2007 / EN 1492-1。
 - ◆ 原材料：高强度低伸缩聚酯纤维长丝。
 - ◆ 工艺控制：执行标准要求。
 - ◆ 尺寸（长度/宽度/厚度）：详见相关标准或客户需求。
 - ◆ 吊带颜色：按不同规格的颜色要求染色。
 - ◆ 破断力：标准6 WLL（6倍极限工作载荷）。
 - ◆ 轻便柔软，方便狭小空间使用；根据使用环境加保护套或保护装置（护角等）；使用环境温度 -40℃ ~ 100℃。
- [注：可根据客户需求研发生产制造破断力：4WLL / 5WLL / 7WLL 圆形吊带类产品]



白色扁平B类吊带
White Flat B type slings



带护套扁平B类吊带
Type B strap with sheath flat



不带护套扁平A类吊带
No sheathed flat Class A slings

极限工作载荷
Extreme Working Load WLL(T)

规格 Code (T)	颜色 Color	垂直提升 steplifting		扼圈式提升 Choke lift		吊篮式提升 Hanging basket type lift		双臂吊索 Double limb slings		三肢四肢吊索 Three limb slings	
		平行	0~45°	45~60°	0~45°	45~60°	0~45°	45~60°	0~45°	45~60°	
		M=1	M=0.8	M=2	M=1.4	M=1	M=1.4	M=1	M=2.1	M=1.5	
1.0	紫色	1.0	0.8	2.0	1.4	1.0	1.4	1.0	2.1	1.5	
2.0	绿色	2.0	1.6	4.0	2.8	2.0	2.8	2.0	4.2	3.0	
3.0	黄色	3.0	2.4	6.0	4.2	3.0	4.2	3.0	6.3	4.5	
4.0	灰色	4.0	3.2	8.0	5.6	4.0	5.6	4.0	8.4	6.0	
5.0	红色	5.0	4.0	10.0	7.0	5.0	7.0	5.0	10.5	7.5	
6.0	棕色	6.0	4.8	12.0	8.4	6.0	8.4	6.0	12.6	9.0	
8.0	蓝色	8.0	6.4	16.0	11.2	8.0	11.2	8.0	16.8	12.0	
10.0	橙色	10.0	8.0	20.0	14.0	10.0	14.0	10.0	21.0	15.0	

大于10T均为橙色 All more than 10T are orange

[注：M=对称承载的系数，吊装带或吊装带零件的安装公差：垂直方向为6°。]

[Note: M = coefficient of symmetrical bearing, installation tolerance of hoisting belt or hoisting belt parts: vertical direction is 6°.]



合成纤维扁平吊装带名称和主要类型 (JB/T8521.1)

Name and main type of synthetic fiber flat sling (JB/T8521.1)

类型 Type	A类 环形吊装带 Category A Ring hoisting belt	B类 带有加强软环眼的单肢吊装带 Category B Single limb hoisting belt with reinforced soft ring eye	C类 带有端配件的单肢吊装带 Category C Single limb hoisting belt with end fittings	Cr类 带有可再连接端配件的单肢吊装带 Category Cr Single limb hoisting belt with re-connectable end fittings
吊装带承载部件 Hoisting belt bearing parts				
单层承载 Single-layer bearing				
双层承载 Double bearing				
四层承载 Four-story load				

[注：“环形”扁平吊装带为“A”类，由单层或双层织带组成。带有加强“软环眼”的单肢吊装带为“B”类；带有金属端配件的单肢吊装带为“C”类；端配件若为可再连接型的为“Cr”类。由单层、双成、三层或四层织带组成。标志名称由代表类别的字母和层数组成，见上表。]

[Note: The "annular" flat slings are of class "A", consisting of single-layer or double-layer ribbons. The single hoisting belt with reinforced "soft ring eye" is "B"; the single hoisting belt with metal end fittings is "C"; and the end fittings are "Cr". consists of single, double, three or four layer webbing. The flag name consists of letters and layers representing the category, as shown in the table above.]

“圆形” / “扁平” 起重用吊装带（合成纤维）通用报废要求（参考）

"Round" / "Flat" re-use hoisting belt (synthetic fiber) General scrap requirements (reference)

起重吊带在使用中出现下列情况之一的应考虑更换：

- 一、吊装带（含护套）在使用中，出现严重磨损、切割性断口、穿孔、撕扯性断裂的。
- 二、承载接缝绽开，缝线磨损断开的。
- 三、纤维表面粗糙易于脱落的。
- 四、起重吊带表面出现过多的点状性松散、酸性碱性烧伤、腐蚀、受热熔化、烧焦的。
- 五、起重吊带纤维软化、老化、强度减弱、弹性趋小的。
- 六、起重吊带泛起死结的。
- 七、带有警戒线吊装带的警戒线出现裸漏的。

Replacement of lifting slings in any of the following situations should be considered:

1. Hoisting belt (including sheath) in use, serious wear, cutting fracture, perforation, tear fracture.
2. Bearing seams are blooming and sewing threads are worn and disconnected.
3. The surface of the fiber is rough and easy to fall off.
4. Lifting belt surface appears too many dot-like loose, acid-base burn, corrosion, heat melting, burning.
5. Lifting belt fiber softening, aging, weak strength, less elastic.
6. Hoisting belt with dead knot.
7. Naked leaks occur on the cordon with the cordon hoisting belt.

更
安
全

更
好
的
服
务

栓紧器 Fastener

栓紧器又称紧固器，是用于在货物的运输、移动、装运或者仓储时固定功能。它们具有锁紧后，不会脱落，安全可靠，轻便、操作简便，保护物体不受损伤。

- ◆ 可根据实际需要配备未配件（双排钩、三角环等）。
- ◆ 请注意：严禁用于起吊货物用、严禁超载使用。
- ◆ 标准长度为8米，可制作1m-50m,使用范围：-40℃-100℃。
- ◆ 仅适用没有破损的栓紧器，标签可以清晰的表明能力。
- ◆ 不要将织带打结使用。
- ◆ 可使用保护套使织物远离锋利棱角，免受磨损或切割。
- ◆ 避免扭曲、拧绞栓紧器。
- ◆ 不要将物体放置在栓紧器上，这样会导致伤害。

经过多年发展，我公司栓紧器产品已形成多品种多规格，均形成规模生产，质优价廉，畅销市场，满足各种用户的需要。

SJ01型 Type SJ01



规格 Size	破断载荷 Break load (kg)	适用带宽 Applicable bandwidth (mm)	总体长度 Total length (m)	成套重量 Weight Package (kg)
SJ01-01	2000	25	8	1.45
SJ01-02	5000	50	8	3.90
SJ01-03	8000	75	8	18.5

SJ02型 Type SJ02



规格 Size	破断载荷 Break load (kg)	适用带宽 Applicable bandwidth (mm)	总体长度 Total length (m)	成套重量 Weight Package (kg)
SJ02-01	2000	25	8	1.45
SJ02-02	5000	50	8	3.90
SJ02-03	8000	75	8	18.5

SJ03型 Type SJ03

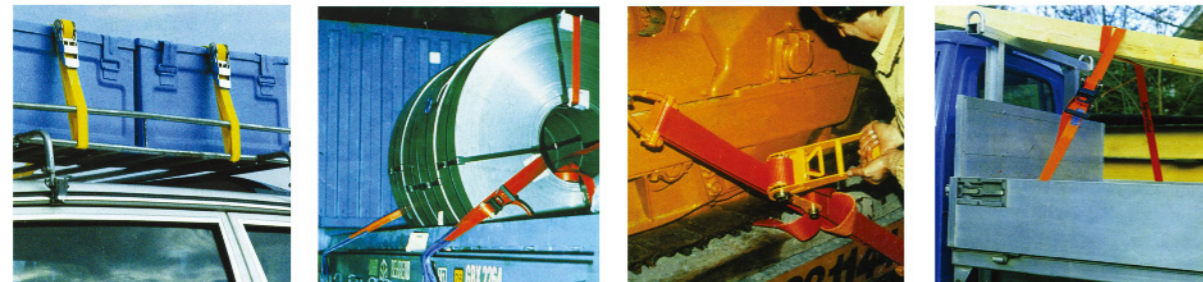


规格 Size	破断载荷 Break load (kg)	适用带宽 Applicable bandwidth (mm)	总体长度 Total length (m)	成套重量 Weight Package (kg)
SJ03-01	2000	25	8	1.45
SJ03-02	5000	50	8	3.90
SJ03-03	8000	75	8	18.5

SJ04型 Type SJ04



规格 Size	破断载荷 Break load (kg)	适用带宽 Applicable bandwidth (mm)	总体长度 Total length (m)	成套重量 Weight Package (kg)
SJ04-01	2000	25	8	1.45
SJ04-02	5000	50	8	3.90
SJ04-03	8000	75	8	18.5



部分检测设备/智能化设备

Partial testing equipment/intelligent equipment

01. 手拉葫芦检测实验平台
02. 智能化多功能激光切割机
03. 智能化电机线圈表面处理系统
04. 智能化电机线圈多组绕线机
05. 智能化机加工雕刻铣
06. 智能化多功能电机平衡测试平台
07. 100吨破断实验拉力机
08. 环链电动葫芦实验平台
09. 智能化200吨破断拉力试验
10. 原材料金属表面洛氏硬度测试仪
11. 环链电动葫芦智能化检测平台



可靠性

可用性
优势

更安全
更好的服务